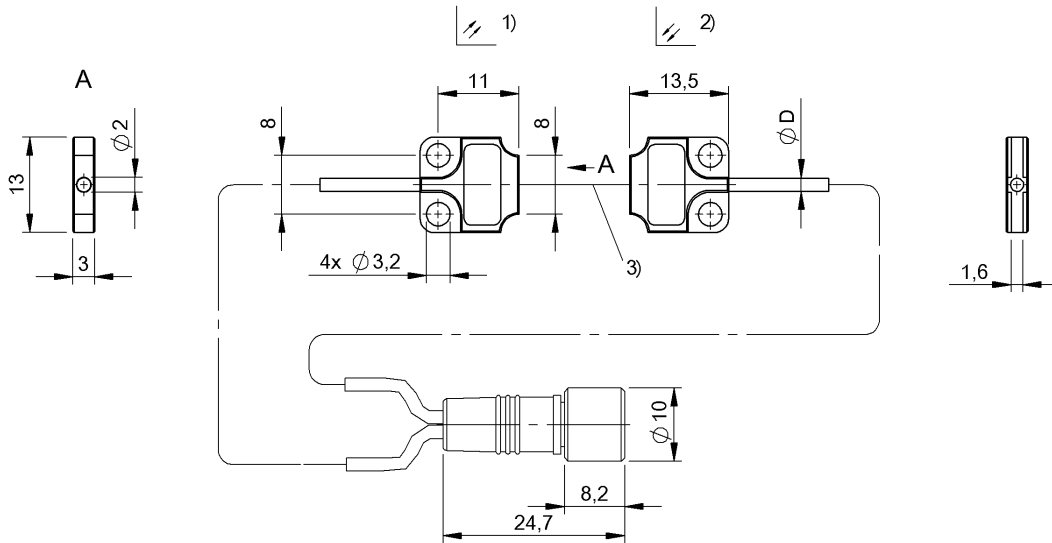


BOH TK-R018-001-01-S49F
BOH002C



1) Emitter 2) Receiver 3) Optical axis



Electrical connection

Cable diameter D	1.80 mm
Cable length	1 m
Connection	M8x1-Connector
Connection type	Cable with connector, 1.00 m, PUR

Environmental conditions

Ambient temperature	-10...55 °C
Protection type IEC 60529	IP65

General data

Approval/Conformity	CE
Basic standard	IEC 60947-5-2
Reference base unit	BAE SA-OH-029-...
Series	R018
Style	Square Straight connection

Material

Housing material	Aluminum
Material jacket	PUR
Material sensing surface	Glass
Surface protection	anodized, natural

Mechanical data

Dimension	13 x 3 x 13.5 mm
Fastening detail	Screw M3
Smallest part typ.	2.0 mm

Optical data

Beam characteristic	divergent, max. 3.5°
LED group per IEC 62471	Exempt Group
Light type	microSPOT LED Red light
Principle of optical operation	Through-beam sensor
Wave length	645 nm

Output/Interface

Switching output	for switching amplifier
------------------	-------------------------

Range/Distance

Measuring range	0 m...500 mm
Range	0 m...500 mm
Rated operating distance Sn	500 mm

Remarks

For additional information, refer to user's guide.

BOH TK-R018-001-01-S49F
BOH002C

Connector view



Symbols for Optoelectronic Sensors

