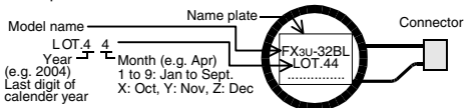


FX3U-32BL Battery Hardware Manual

The battery is principally used to back-up the internal RAM area (program, retentive device, RTC and others) in PLC main unit.

1. Battery Life and Date of Manufacture

- Battery life: Approx. 5 years (ambient temperature: 25°C)
[Guarantee period: 1 year after delivery or 18 months after production]
- Replacement period: Within 4 or 5 years
(Due to natural discharge within all batteries, please prepare a replacement before the above-stated replacement period.)
- Example of date-of-manufacture indication:



2. Caution on Use

2.1 Installation

- Power off the PLC (all phase) before attaching/detaching the battery.
- Securely attach the connector to the battery connector on the PLC main unit.
- Firmly attach the battery cover when powering on the PLC or during operation.

2.2 Transport and storage

- During transportation or other such occurrence, avoid any impact to the battery as the PLC may be seriously damaged by the liquid leakage etc. from the battery.

2.3 Disposal

- Please contact a company certified in the disposal of electronic waste for environmentally safe recycling and disposal of this product.

JY997D14101B
(0506)



MITSUBISHI ELECTRIC
CORPORATION
Made in Japan

3. Specification

Item	Specification
Nominal voltage	3V

- Battery voltage can be monitored with PLC data register D8005.

4. Battery Replacement

- Read and save the PLC program using the programming tool before replacing the battery.
- The connector of the new battery should be attached within 20 seconds after removing the connector of the old battery.
- For the replacement procedure, refer to the User's Manual - Hardware Edition of the respective PLC.