

International TOR Rectifier IRFK2DE50, IRFK2FE50

Isolated Base Power HEX-pak™ Assembly - Half Bridge Configuration

- High Current Capability.
- UL recognised E78996.
- Electrically Isolated Base Plate.
- Easy Assembly into Equipment.

Description

The HEX-pak™ utilises the well-proven HEXFET™ die, combining low on-state resistance with high transconductance. These superior technology die are assembled by state of the art techniques into the TO-240 package, featuring 2.5kV rms isolation and solid M5 screw connections. The small footprint means the package is highly suited to power applications where space is a premium. Available in two versions, IRFK.D... for fast switching and IRFK.F... for oscillation sensitive applications.

$$V_{DS} = 800V$$

$$R_{DS(on)} = 600m\Omega$$

$$I_D = 12A$$

Absolute Maximum Rating

	Parameter	Max.	Units
$I_D @ T_C=25^\circ C$	Continuous Drain Current	12	A
$I_D @ T_C=100^\circ C$	Continuous Drain Current	8	A
I_{DM}	Pulse Drain Current	48	A ①
$P_D @ T_C=25^\circ C$	Maximum Power Dissipation	500	W
V_{GS}	Gate-to-Source Voltage	20	V
V_{INS}	R.M.S. Isolation Voltage, circuit to base	2.5	kV
T_J	Operating Junction Temperature Range	-40 to 150	°C
T_{STG}	Storage Temperature Range	-40 to 150	°C

Thermal and Mechanical Specifications

	Parameter	Min.	Typ.	Max.	Units
R_{thJC}	Junction-to-Case	-	-	0.25	K/W ②
R_{thCS}	Case-to-Sink, smooth & greased surface	-	0.1	-	K/W
T	Mounting Torque +10%				③
	HEXpak to Heatsink	-	5	-	Nm
	Busbar to HEXpak	-	3	-	Nm
wt	Approximate Weight	-	140	-	g
		-	5	-	oz

Notes:

- ① - Repetitive Rating: Pulse width limited by maximum junction temperature see figure 8.
- ② - Per Module.
- ③ - A mounting compound is recommended and the torque should be rechecked after a period of three hours to allow for the spread of the compound.

IRFK2DE50, IRFK2FE50



Electrical Characteristics @ $T_J = 25^\circ\text{C}$ (Unless otherwise specified)

	Parameter	Min.	Typ.	Max.	Units	Test Conditions	
B_{VDS}	Drain-to-Source Breakdown Voltage	80	-	-	V	$V_{GS}=0V, I_D=1.0mA$	
$R_{DS(on)}$	Static Drain-to-Source On-State Resistance	-	480	600	m Ω	$V_{GS}=10V, I_D=8A$	
$I_{D(on)}$	On-State Drain Current	12	-	-	A	$V_{DS} > I_{D(on)} \times R_{DS(on)}$ max, $V_{GS}=10V$	
$V_{GS(th)}$	Gate Threshold Voltage	2.0	-	4.0	V	$V_{DS}=V_{GS}, I_D=1.0mA$	
g_{fs}	Forward Transconductance ^④	12	17	-	S	$V_{DS} > 50V, I_D=8A$	
I_{DSS}	Zero Gate Voltage Drain Current	-	-	0.5	mA	$V_{DS}=V_{DS}$ max, $V_{GS}=0V$	
		-	-	2.0	mA	$V_{GS}=10V, T_C=125^\circ\text{C},$ $V_{DS}=V_{DS}$ max x 0.8	
I_{GSS}	Gate-to-Source Leakage Forward	-	-	200	nA	$V_{GS}=20V$	
I_{CSS}	Gate-to-Source Leakage Reverse	-	-	-200	nA	$V_{GS}=-20V$	
Q_g	Total Gate Charge	-	240	380	nC	$I_D=12A, V_{GS}=10V,$	
Q_{gs}	Gate-to-Source Charge	-	20	30	nC	$V_{DS}=V_{DS}$ max x 0.8	
Q_{gd}	Gate-to-Drain ("Miller") Charge	-	144	220	nC		
$t_{d(on)}$	Turn-on Delay Time	IRFK2DE50	-	40	-	ns	$V_{DD}=400V, I_D=8A,$
		IRFK2FE50	-	45	-	ns	
t_r	Rise Time	IRFK2DE50	-	50	-	ns	$V_{GS}=10V,$
		IRFK2FE50	-	65	-	ns	
$t_{d(off)}$	Turn-off Delay Time	IRFK2DE50	-	240	-	ns	$R_{SOURCE}=3.3\Omega$
		IRFK2FE50	-	320	-	ns	
t_f	Fall Time	IRFK2DE50	-	50	-	ns	
		IRFK2FE50	-	80	-	ns	
L_{DS}	Drain-to-Source Inductance	-	18	-	nH		
C_{iss}	Input Capacitance	-	5.2	-	nF	$V_{GS}=0V, V_{DS}=25V,$	
C_{oss}	Output Capacitance	-	1.0	-	nF	$f=1.0MHz$	
C_{rss}	Reverse Transfer Capacitance	-	0.35	-	nF		
	Linear Derating Factor	-	-	4	W/K		

Source-Drain Diode Ratings and Characteristics

	Parameter	Min.	Typ.	Max.	Units	Test Conditions
I_S	Continuous Source Current (Body Diode)	-	-	12	A	
I_{SM}	Pulsed Source Current (Body Diode)	-	-	42	A	
V_{SD}	Diode Forward Voltage	-	-	1.8	V	$V_{GS}=0V, I_S=12A, T_C=25^\circ\text{C}$
t_{rr}	Reverse Recovery Time	370	770	1600	ns	$dI/dt=200A/\mu s, T_J=150^\circ\text{C}$
Q_{rr}	Reverse Recovered Charge	6.2	12.8	26.0	μC	$I_S=12A$

Notes:

④ - Pulse Width $\leq 300\mu s$; Duty cycle $\leq 2\%$.



IRFK2DE50, IRFK2FE50

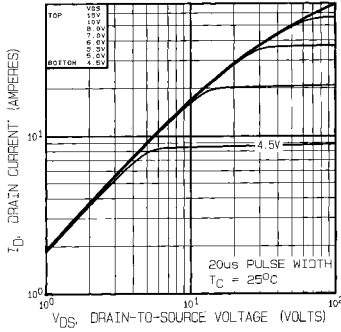


Fig 1. Typical Output Characteristics,
 $T_C = 25^\circ\text{C}$

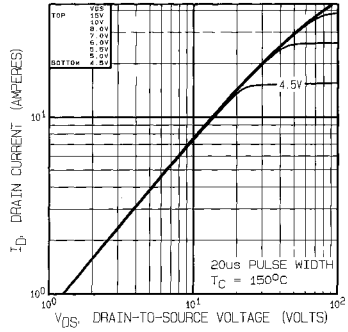


Fig 2. Typical Output Characteristics,
 $T_C = 150^\circ\text{C}$

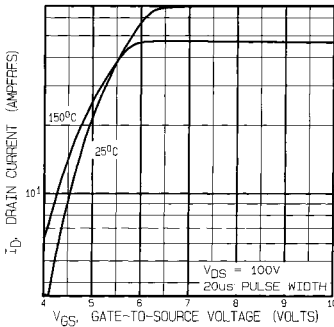


Fig 3. Typical Transfer Characteristics

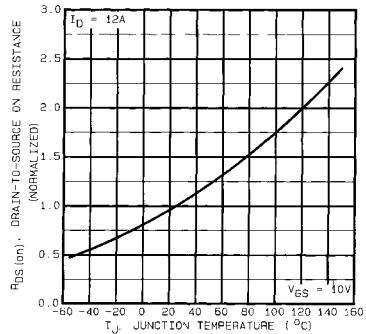


Fig 4. Normalized On-Resistance Vs.
Temperature

IRFK2DE50, IRFK2FE50

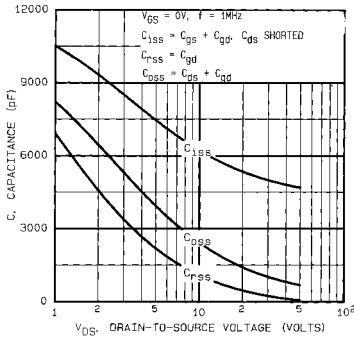


Fig 5. Typical Capacitance Vs. Drain-to-Source Voltage

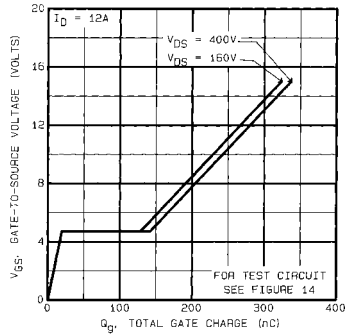


Fig 6. Typical Gate Charge Vs. Gate-to-Source Voltage

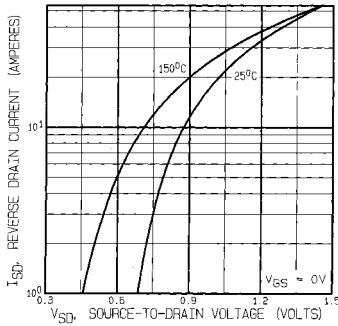


Fig 7. Typical Source-Drain Diode Forward Voltage

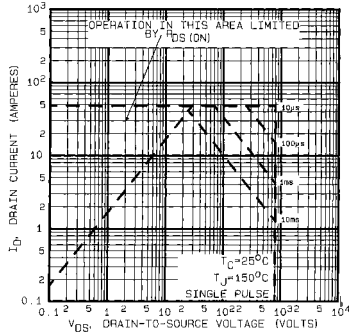


Fig 8. Maximum Safe Operating Area

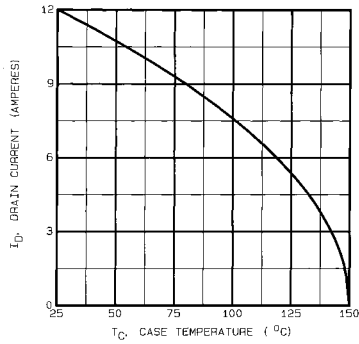


Fig 9. Maximum Drain Current Vs. Case Temperature

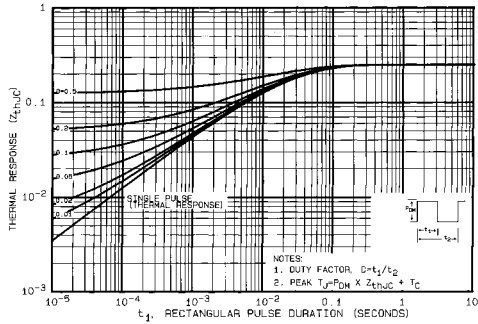


Fig 10. Maximum Effective Transient Thermal Impedance, Junction-to-Case

IRFK2DE50, IRFK2FE50

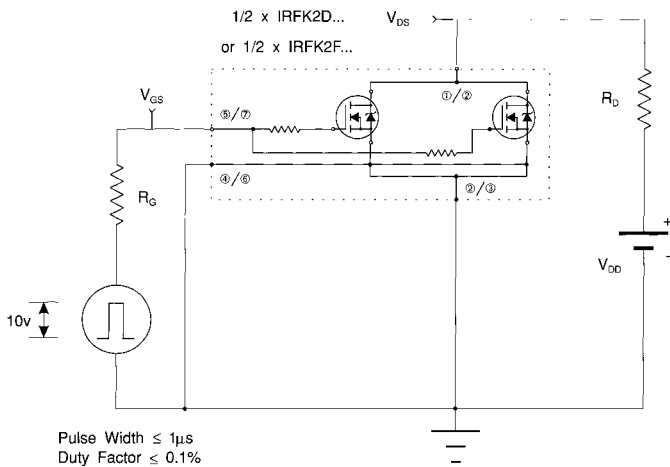


Fig 11a. Switching Time Test Circuit

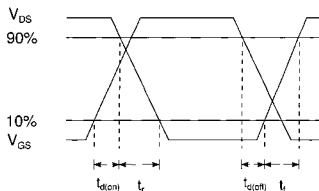
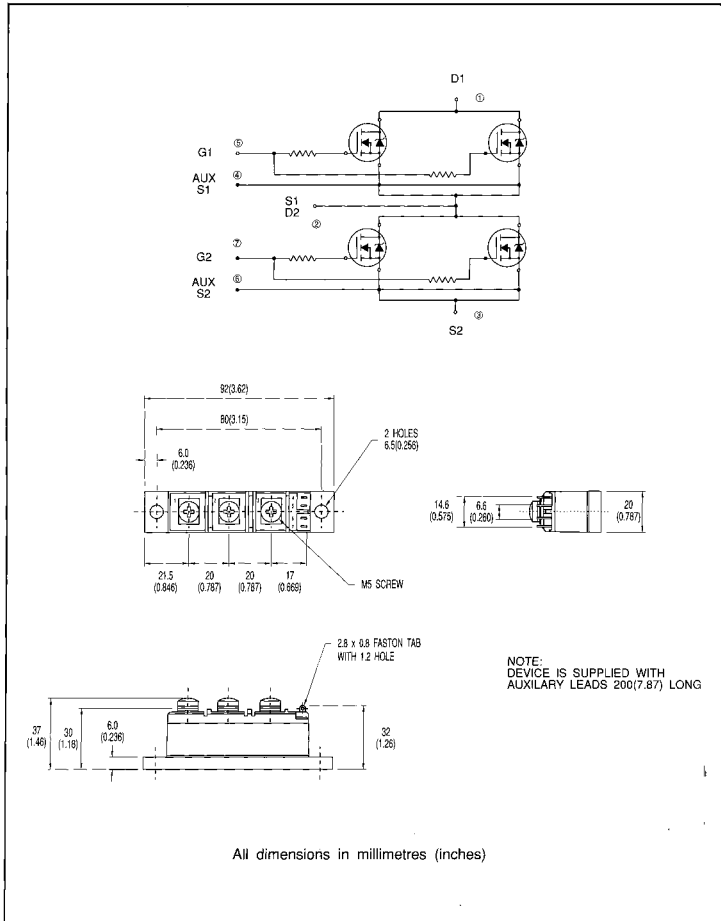


Fig 11b. Switching Time Waveforms



IRFK2DE50, IRFK2FE50

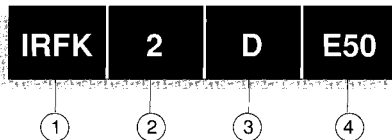
Circuit Configuration and Outline



IRFK2DE50,IRFK2FE50



Part Numbering



1. - HEX-pak Module.
2. - Number of arms of bridge.
3. - D - Fast switching.
- F - Oscillation resistant for sensitive applications.
4. - Voltage code:-
 - 054 - 60V
 - 150 - 100V
 - 250 - 200V
 - 350 - 400V
 - 450 - 500V
 - C50 - 600V
 - E50 - 800V

WORLD HEADQUARTERS: 233 Kansas St., EL SEGUNDO, California 90245, USA. Tel:(213) 772-2000. Tlx:664464. Fax:(213) 772-9028
EUROPEAN HEADQUARTERS: Hurst Green, OXTED, Surrey RH8 9BB, UK. Tel:(0883) 713215. Tlx:95219. Fax:(0883)714234.

CANADA: 101 Bantley St., Markham, ONTARIO L3R 3L1. Tel:(416)475-1897. Tlx:06-966-650. Fax:(416)475-8801
CZECHOSLOVAKIA: Macurova 191/565, Box 30, 149 00 PRAGUE. Tel:(2) 792 6931. Fax:(2) 792 6831.
DENMARK: P.O. Box 70, Krogshoejvej 51, DK-2880 BAGSVAERD. Tel: (45) 44 37 71 50. Fax (45) 44 37 71 52.
FRANCE: 123 Rue de Petit Vaux, 91360 EPINAY sur ORGE. Tel:(1)64.54.83.29. Tlx:600943. Fax:(1)64.54.83.30.
FINLAND: Bilikogsvilgen 19, 02590 Sjunckas St. Tel:(0) 282 8144. Fax:(0) 282 8150.
GERMANY: Seiblbunger, 157, D-6360 BAD HOMBURG. Tel:(61)72-37056. Tlx:41004. Fax:(61)72 37055.
HUNGARY: Szent Istvan Park 15, H-1137 BUDAPEST. Tel:(1) 1296 822. Fax:(1) 1296 822.
HONG KONG: 202 Potter Building, 60 Queens Road Central, HONG KONG. Tel:(85) 252 36355. Fax: (85) 284 52908.
ITALY: Via Liguria 49, 10071 Borgaro, TORINO. Tel:(0)11470 14 84. Tlx:221257. Fax:(0)11470 42 90.
Via Zucca 3, 20017 Rho MILANO. Tel:(02)93 50 36 50. Fax:(02)93 50 36 55.
Via Arno 1, 40139 BOLOGNA. Tel:(05)149 83 07. Fax:(05)149 54 80.
INDIA: 31 Greenacre, 5 Union Park, Khar (W), BOMBAY 400 052. Tel:(022)535026/533779/540242. Tlx:011-71481.
JAPAN: K & H Bldg 2F, 3-30-4 Nishi-Ikebukuro, Toshima-ku, TOKYO, Japan 171. Tel:(03)983 0641. Fax:(03)983 0642.
SINGAPORE: HEX 10-01 Fortuna Centre, 190 Middle Road, SINGAPORE 0718. Tel:(65)336 3922/337 4695/336 6286. Fax:(65)337 4692.
SWEDEN: Box 86, S-162 12 Vallingby 1, STOCKHOLM. Tel:(08)810035. Fax:(08)874242.
SWITZERLAND: CH-9032 ZURICH, Kirchenweg 5. Tel:(01)386 8702/8686. Fax:(01)383 5109/2379.
U.S.A.:
Central Zone: 2401 Plum Grove Road, Suite 111, PALATINE, IL 60067. Tel:(312)397-0002. Fax:(312)397-0114.
Eastern Zone: 71 Grand Avenue, PALMBADES PARK, NJ 07650. Tel:(201)943-4554. Fax:(201)943-5754.
Southern Zone: 800 Office Plaza Blvd., Suite 401, KISSIMMEE, FL 32743. Tel:(407)983-2383. Fax:(407)933-2293.
Western Zone: 222 Kansas Street, EL SEGUNDO, CA 90245. Tel:(213)607-8886. Fax:(213)640-6533.

Sales Offices, Agents and Distributors in Major Cities throughout the World.

In the interest of product improvement INTERNATIONAL RECTIFIER reserves the right to change specifications at any time without notice.

MJW/1/82