



HORUS[®]
PHOTOVOLTAIC
PROTECTION



04

**gPV
CYL**
fuse links



06

**gPV
NH**
1000V DC
fuse links



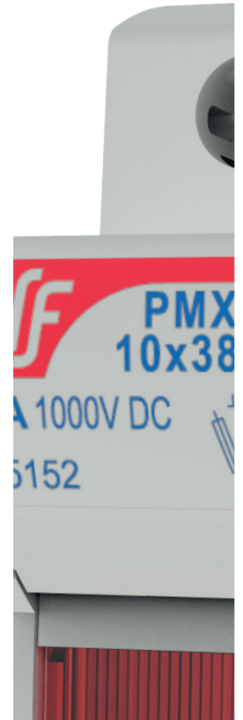
08

**gPV
NH XL**
1500V DC
fuse links



10

**gG/GL & gS
NH**
800V AC
fuse links



11

**PMX
CYL**
fuse holders





12

14

15

16

17

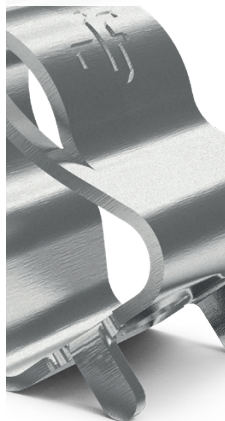
PMLe
PML
CYL
fuse holders

CLIP
CONTACT
CYL
Ø10 fuse links

ST
NH
1000V DC
fuse bases

ST
NH XL
1500V DC
fuse bases

ST
NH
690/800V AC
fuse bases



gPV CYLINDRICAL fuse links

gPV 10x38 and 14x51 cylindrical fuse links have been developed to offer a compact, safety and economic protection of photovoltaic modules (array protection) with voltages up to 1.000/1.100V DC.

They provide protection against overloads as well as short-circuit (gPV class according to the requirements of IEC60269-6 and UL248-19 Standards).

Made with ceramic tube with high withstand to internal pressure and thermal shock, that allows a high breaking capacity in a reduced physical space. Contacts are made in silver plated copper and melting elements are made in pure silver in order to avoid the aging and thus keep unalterable the electric characteristics.

For these fuse-links we recommend the utilization of PMX fuse holders.

10x38

U **1000V DC**

BREAKING CAPACITY **30kA**

STANDARDS

NEUTRAL LINK

I_n (A)	REFERENCE	PACKING Uni /BOX
1	491601	10/100
2	491602	10/100
3	491604	10/100
4	491605	10/100
5	491606	10/100
6	491610	10/100
8	491615	10/100
10	491620	10/100
12	491625	10/100
15	491629	10/100
16	491630	10/100
20	491635	10/100
431000		10/100



491635



14x51

U **1100V DC**

BREAKING CAPACITY **10kA**

U **1000V DC**

BREAKING CAPACITY **30kA**

NEUTRAL LINK

15	491647	10/50
20	491648	10/50
25	491650	10/50
32	491655	10/50
432000		10/50



491655

STANDARDS
IEC 60269-1
IEC 60269-6
UL 248-19

DIMENSIONS
PAG 19
PAG 20

t-I CHARACTERISTICS
PAG 19
PAG 20

AMBIENT TEMPERATURE DERATING FACTOR
PAG 53

COMPATIBLE PMX FUSE HOLDERS
PAG 11

COMPATIBLE CLIP CONTACT Ø 10 FUSE-LINKS
PAG 14

CYL | gPV CYLINDRICAL fuse links

gPV 10x85 & 10/14x85 cylindrical fuse-links have been developed to offer a compact, safety and economic protection of photovoltaic modules (array protection) with voltages up to 1.200/1.500 VDC.

They provide protection against overloads as well as short-circuit (gPV class according to the requirements of IEC60269-6 and UL248-19 Standards). Made with ceramic tube with high withstand to internal pressure and thermal shock, that allows a high breaking capacity in a reduced physical space. Contacts are made in silver plated copper and melting elements are made in pure silver in order to avoid the aging and thus keep unalterable the electric characteristics.

For these fuse-links we recommend the utilization of PML fuse holders.

10x85

U **1500V DC**

BREAKING CAPACITY **30kA**

STANDARDS

U **1200V DC**

BREAKING CAPACITY **10kA**

NEUTRAL LINK

I_n (A)	REFERENCE	PACKING Uni /BOX
2	492202	10/50/1000
4	492205	10/50/1000
6	492210	10/50/1000
8	492215	10/50/1000
10	492220	10/50/1000
12	492225	10/50/1000
15	492229	10/50/1000
16	492230	10/50/1000
20	492235	10/50/1000
25	492240	10/50/1000
	431010	10/50/1000



492240

10/14x85

U **1500V DC**

BREAKING CAPACITY **10kA**

20	492250	10/480
25	492255	10/480
30	492260	10/480
32	492262	10/480



492262

22x65

U **1500V DC**

BREAKING CAPACITY **30kA**

40	492270	10/260
45	492272	10/260
50	492275	10/260
55	492278	10/260
60	492280	10/260



492280

STANDARDS	DIMENSIONS	t-I CHARACTERISTICS	AMBIENT TEMPERATURE DERATING FACTOR	COMPATIBLE PML FUSE HOLDERS	COMPATIBLE CLIP CONTACT Ø 10 FUSE-LINKS
IEC 60269-1 IEC 60269-6 UL 248-19	PAG 21 PAG 22 PAG 23	PAG 21 PAG 22 PAG 23	PAG 53	PAG 13	PAG 14

NH | gPV NH 1000V DC fuse links

NH gPV fuse links for photovoltaic installations have been developed to offer a safety protection solution in sub-array, array or inverter DC input of photovoltaic installations.

They provide protection against overloads as well as short-circuits (gPV class according to IEC 60269 and UL248-19 Standards, with a minimum fusing current of 1,35·In. Made with ceramic body with high withstand to internal pressure and thermal shock. Contacts are made in silver plated copper or brass and melting elements are made in pure silver in order to avoid the aging and thus keep unalterable the electric characteristics.

For these fuse-links we recommend the utilization of 1000 VDC NH ST fuse bases.

NH1

U **1000V DC**

BREAKING CAPACITY **30kA**

CONTACTS **KNIFE BLADE**

STANDARDS

In (A)	REFERENCE	PACKING Uni /BOX
25	373210	1/30
32	373215	1/30
40	373225	1/30
50	373230	1/30
63	373235	1/30
80	373240	1/30
100	373245	1/30
125	373250	1/30
160	373255	1/30
200	373260	1/30



373250

NH2

U **1000V DC**

BREAKING CAPACITY **30kA**

CONTACTS **KNIFE BLADE**

200	373350	1/15
250	373360	1/15



373350

NH3

U **1000V DC**

BREAKING CAPACITY **30kA**

CONTACTS **KNIFE BLADE**

STANDARDS

200	373425	1/15
250	373435	1/15
315	373445	1/15
355	373450	1/15
400	373455	1/15



373435

STANDARDS

IEC 60269-1
IEC 60269-6
UL 248-19

DIMENSIONS

PAG 24

t-I CHARACTERISTICS

PAG 25

AMBIENT TEMPERATURE DERATING FACTOR

PAG 53

COMPATIBLE ST NH 1000V AC BASES

PAG 15

NH | gPV NH 1000V DC fuse links

NH gPV fuse links for photovoltaic installations have been developed to offer a safety protection solution in sub-array, array or inverter DC input of photovoltaic installations.

They provide protection against overloads as well as short-circuits (gPV class according to IEC 60269 and UL248-19 Standards, with a minimum fusing current of 1,35·In. Made with ceramic body with high withstand to internal pressure and thermal shock. Contacts are made in silver plated copper or brass and melting elements are made in pure silver in order to avoid the aging and thus keep unalterable the electric characteristics.

This bolted type is specially designed for applications where can be mounted directly on busbars.

NH1	
U	1000V DC
BREAKING CAPACITY	30kA
CONTACTS	BOLTED BLADE

In (A)	REFERENCE	PACKING Uni /BOX
25	373210 B	1/30
32	373215 B	1/30
40	373225 B	1/30
50	373230 B	1/30
63	373235 B	1/30
80	373240 B	1/30
100	373245 B	1/30
125	373250 B	1/30
160	373255 B	1/30
200	373260 B	1/30



373260B

NH2	
U	1000V DC
BREAKING CAPACITY	30kA
CONTACTS	BOLTED BLADE

200	373350 B	1/15
250	373360 B	1/15



373350B

NH3	
U	1000V DC
BREAKING CAPACITY	30kA
CONTACTS	BOLTED BLADE

200	373425 B	1/15
250	373435 B	1/15
315	373445 B	1/15
355	373450 B	1/15
400	373455 B	1/15



373435B

STANDARDS

IEC 60269-1
IEC 60269-6
UL 248-19

DIMENSIONS

PAG 24

t-I CHARACTERISTICS

PAG 25

AMBIENT TEMPERATURE DERATING FACTOR

PAG 53

NH gPV NH XL 1500V DC fuse links

NH gPV 1500V DC fuse links for photovoltaic installations have been developed to offer a safety protection solution in sub-array, array or inverter DC input of photovoltaic installations.

They provide protection against overloads as well as short-circuits (gPV class according to IEC 60269 and UL248-19 Standards), with a minimum fusing current of 1,35·In. Made with ceramic body with high withstand to internal pressure and thermal shock. Contacts are made of silver plated copper and melting elements are made of pure silver in order to avoid the aging and thus keep unalterable the electric characteristics. They have a low poer losses values to get a good efficiency.

For these fuselinks we recommend the utilization of 1500V DC NH XL fuse bases.

NH1 XL

U **1500V DC**

BREAKING CAPACITY **30kA**

CONTACTS **KNIFE BLADE**

STANDARDS

In (A)	REFERENCE	PACKING Uni /BOX
40	372225	1/18
50	372230	1/18
63	372235	1/18
80	372240	1/18
100	372245	1/18
125	372250	1/18
160	372255	1/18
200	372260	1/18



372235

NH2 XL

U **1500V DC**

BREAKING CAPACITY **30kA**

CONTACTS **KNIFE BLADE**

STANDARDS

200	372350	1/10
250	372360	1/10



372360

NH3 L

U **1500V DC**

BREAKING CAPACITY **30kA**

CONTACTS **KNIFE BLADE**

315	372445	1/10
350	372448	1/10
355	372450	1/10
400	372455	1/10



372455

STANDARDS	DIMENSIONS	t-I CHARACTERISTICS	AMBIENT TEMPERATURE DERATING FACTOR	COMPATIBLE ST NH 1500V DC BASES
IEC/EN 60269-1 IEC/EN 60269-2	PAG 26	PAG 27	PAG 53	PAG 16

NH gPV NH XL 1500V DC fuse links

NH gPV 1500V DC fuse links for photovoltaic installations have been developed to offer a safety protection solution in sub-array, array or inverter DC input of photovoltaic installations.

They provide protection against overloads as well as short-circuits (gPV class according to IEC 60269 and UL248-19 Standards), with a minimum fusing current of 1,35·In. Made with ceramic body with high withstand to internal pressure and thermal shock. Contacts are made of silver plated copper and melting elements are made of pure silver in order to avoid the aging and thus keep unalterable the electric characteristics. They have a low poer losses values to get a good efficiency.

This bolted type is specially designed for applications where can be mounted directly on busbars.

NH1 XL

U **1500V DC**

BREAKING CAPACITY **30kA**

CONTACTS **BOLTED BLADE**

In (A)	REFERENCE	PACKING Uni /BOX
40	372225 B (UL)	1/18
50	372230 B (UL)	1/18
63	372235 B (UL)	1/18
80	372240 B (UL)	1/18
100	372245 B (UL)	1/18
125	372250 B (UL)	1/18
160	372255 B (UL)	1/18
200	372260 B	1/18



372260B

NH2 XL

U **1500V DC**

BREAKING CAPACITY **30kA**

CONTACTS **BOLTED BLADE**

200	372350 B (UL)	1/10
250	372360 B (UL)	1/10



372360B

NH3 L

U **1500V DC**

BREAKING CAPACITY **30kA**

CONTACTS **BOLTED BLADE**

315	372445 B (UL)	1/10
350	372448 B (UL)	1/10
355	372450 B (UL)	1/10
400	372455 B (UL)	1/10



372455B

STANDARDS

IEC 60269-1
IEC 60269-6
UL 248-19

DIMENSIONS

PAG 26

t-I CHARACTERISTICS

PAG 27

AMBIENT TEMPERATURE DERATING FACTOR

PAG 53

NH | gG/gL & gS NH 800V AC fuse links

These knife type (NH) fuse links with high breaking capacity are intended for protection of the output side of new generation of photovoltaic inverters, with output voltage of 800V AC. They are also adequate for the protection of 690V AC capacitor banks. They are gG class and provide protection against overloads and short-circuits with rated voltages up to 800V +10%. The rated breaking capacity is 80kA. They have a low values of power dissipations. Manufactured with ceramic body with high withstand to internal pressure and thermal shock, that allows a high breaking capacity. Knife contacts are made of silver plated copper or brass.

Can be mounted in open-type ST fuse bases or in fuse disconnectors type BS.

NH00 **gS**

U **800V AC**

BREAKING CAPACITY **80kA**

In (A)	REFERENCE	PACKING Uni /BOX
25	369030	3/30
35	369035	3/30
40	369045	3/30
50	369050	3/30
63	369055	3/30
80	369060	3/30
100	369065	3/30



369065

NHC1 **gG**

U **800V AC**

BREAKING CAPACITY **80kA**

25	385210	3/30
35	385220	3/30
40	385225	3/30
50	385230	3/30
63	385235	3/30



385235

NH1 **gG**

U **800V AC**

BREAKING CAPACITY **80kA**

80	385240	3/30
100	385245	3/30
125	385250	3/30
160	385255	3/30



385255

NH3 **gG**

U **800V AC**

BREAKING CAPACITY **80kA**

200	385425	3/18
250	385435	3/18
315	385445	3/18
355	385450	3/18
400	385455	3/18



385445

STANDARDS

IEC/EN 60269-1
IEC/EN 60269-2

DIMENSIONS

PAG 28

t-I CHARACTERISTICS

PAG 29

AMBIENT TEMPERATURE DERATING FACTOR

PAG 53

COMPATIBLE ST NH 800V AC BASES

PAG 17

PMX CYLINDRICAL fuse holders

PATENTED DESIGN

The first feature that PV Modular fuse holders offers, is the 1000V DC rated voltages. They have been developed to offer a compact, safety and economic protection solution in photovoltaic installations where due to the increase of the power and technology evolution, no-load voltages above 800V DC can be achieved.

Modular fuse holders for 10x38 & 14x51 gPV fuses according IEC/EN 60269 standard. Compact design, with reduced distances. Manufactured with a high quality materials: Silver plated copper contacts and plastic materials with high temperature resistance and selfextinguishable.

All the materials are according to the European Directive RoHS (Restriction of the use of certain hazardous substances in electrical material).

10x38

U **1000V DC**

In **32A**

STANDARDS

INDICATOR	POLES	MODULES	REFERENCE	PACKING Uni /BOX
NO	SINGLE-POLE	1	485150	12/192
NO	TWO-POLES	2	485151	6/96
YES	SINGLE-POLE	1	485152	12/192
YES	TWO-POLES	2	485153	6/96



485152

14x51

U **1100V DC**

In **50A**

NO	SINGLE-POLE	1	485250	6/90
NO	TWO-POLES	2	485251	3/45
YES	SINGLE-POLE	1	485252	6/90
YES	TWO-POLES	2	485253	3/45



485252

22x65

U **1500V DC**

In **100A**

STANDARDS

NO	SINGLE-POLE	1	485720	6/48
----	-------------	---	---------------	------



STANDARDS

IEC/EN 60269-1 **UL 4248-1**
 IEC/EN 60269-2 **UL 4248-19**
 CSA 4248-19

DIMENSIONS

PAG 30
 PAG 33
 PAG 36

ACCESSORIES

PAG 31
 PAG 34
 PAG 37

COMPATIBLE gPV CYL FUSE LINKS

PAG 04

PML_e
CYLINDRICAL
fuse holders

**PATENTED
DESIGN**

Fuse holder for cylindrical fuse link size 10x85 gVP and 10/14x85 gPV.

- Modern compact design.
- Ventilation zones optimized for a better heat dissipation.
- Manufactured with a high quality materials.
- Silver plated copper contacts.
- Plastic materials with high temperature resistance and self-extinguishable.
- All the materials are according to the European Directive RoHS (Restriction of the use of certain hazardous substances in electrical material) and also halogen free.

U	1500V DC
In	32A

POLES	MODULES (mm)	REFERENCE	PACKING Uni /BOX
SINGLE-POLE	22,5	485705	10/100



PML_e
10x85
10/14x85
1500V DC



10x85 position



10/14x85 position

STANDARDS	
IEC/EN 60269-1	UL 4248-1
IEC/EN 60269-2	UL 4248-19

DIMENSIONS
PAG 39

ACCESSORIES
PAG 40

COMPATIBLE gPV CYL FUSE LINKS
PAG 05

PML CYLINDRICAL fuse holders

PATENTED DESIGN

Fuse holder for cylindrical fuse link size 10x85 gVP and 10/14x85 gPV.

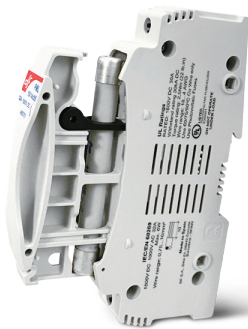
- Modern compact design.
- Ventilation zones optimized for a better heat dissipation.
- Manufactured with a high quality materials.
- Silver plated copper contacts.
- Plastic materials with high temperature resistance and self-extinguishable.
- All the materials are according to the European Directive RoHS (Restriction of the use of certain hazardous substances in electrical material) and also halogen free.

U 1500V DC
In 32A
STANDARDS

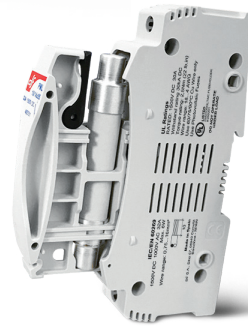
POLES	MODULES (mm)	REFERENCE	PACKING (Uni /BOX)
SINGLE-POLE	24	485701	6/84



PML
10x85
10/14x85
1500V DC



10x85 position



10/14x85 position

STANDARDS	
IEC/EN 60269-1	UL 4248-1
IEC/EN 60269-2	UL 4248-19

DIMENSIONS
PAG 41

ACCESSORIES
PAG 42

COMPATIBLE gPV CYL FUSE LINKS
PAG 05



CLIP CONTACT CYLINDRICAL Ø10 fuse links

Clip contact for Ø10 cylindrical fuse links.
Screw fixation and PCB versions. Manufactured in tinned bronze.
All the materials are according to the European Directive RoHS (Restriction of the use of certain hazardous substances in electrical material).

	
FIXATION	SCREW
U	UP TO 1500V AC/DC
In	25A

Pd max
(W)

4

REFERENCE



482001

PACKING

Uni /BOX

50/200



	
FIXATION	PCB
U	UP TO 1500V AC/DC
In	25A

4

482002

50/200



DIMENSIONS

PAG 44

**COMPATIBLE
gPV CYL FUSE LINKS**

PAG 04 | 05

ST NH 1000V DC bases

Fuse bases for NH fuse links. Manufactured with a high quality materials. Silver plated copper contacts. Plastic materials with high temperature resistance and self-extinguishable. All the materials are according to the European Directive RoHS. For screw fixing. Single-phase type. Connection by screws.

Contacts with double spring in order to obtain an optimum operation. Wide range of accessories that enables IP20 protection index: contact covers, fuse link covers and partition walls. Multi-pole units can be made with connection accessories.

Manufactured according IEC, VDE and DIN standards. UL certification (File E359201).

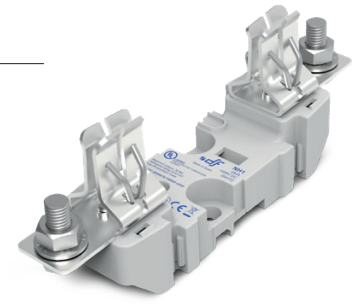
NH1

U **1000V DC**

IN **250A**

STANDARDS

POLES	FIXING	CONNECTION	REFERENCE	PACKING
SINGLE-POLE	DIN RAIL/SCREW	SCREW	354172	1 Uni /BOX



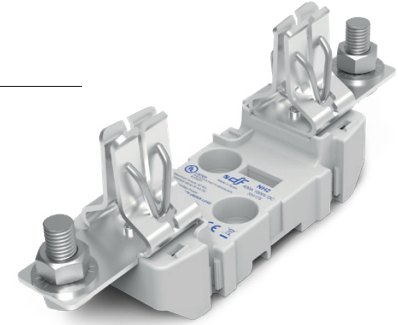
NH2

U **1000V DC**

IN **400A**

STANDARDS

SINGLE-POLE	DIN RAIL/SCREW	SCREW	354175	1
-------------	----------------	-------	---------------	---



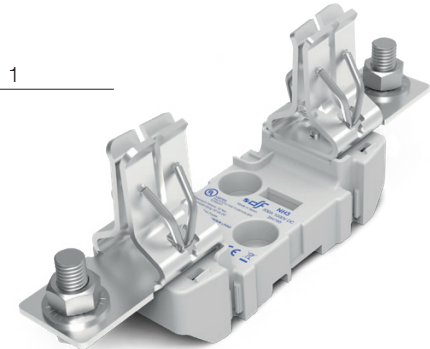
NH3

U **1000V DC**

IN **500A**

STANDARDS

SINGLE-POLE	DIN RAIL/SCREW	SCREW	354180	1
-------------	----------------	-------	---------------	---



STANDARDS	
IEC/EN 60269-1	UL 4248-1
IEC/EN 60269-2	UL 4248-19

DIMENSIONS
PAG 45

ACCESSORIES
PAG 18

ACCESSORIES ASSEMBLY
PAG 48

COMPATIBLE
gPV NH 1000V DC FUSE LINKS
PAG 06

ST NH XL1500V DC fuse bases

Fuse bases for NH fuse-links. Manufactured with a high quality materials. Silver plated copper contacts. Plastic materials with high temperature resistance and self-extinguishable. All the materials are according to the European Directive RoHS. For screw fixing. Single-phase type. Connection by screws.

Contacts with double spring in order to obtain an optimum operation. Wide range of accessories that enables IP20 protection index: contact covers, fuse link covers and partition walls. Multi-pole units can be made with connection accessories.

Manufactured according IEC, VDE and DIN standards.
UL certification (File E359201).

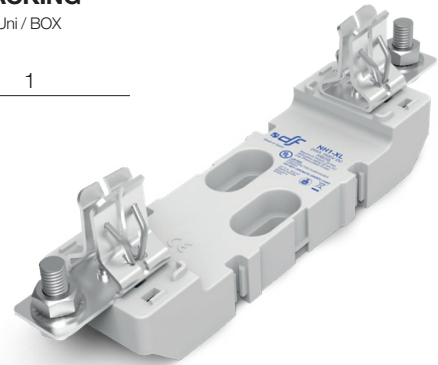
NH1 XL

U **1500V DC**

IN **200A**

STANDARDS

POLES	FIXING	CONNECTION	REFERENCE	PACKING Uni / BOX
SINGLE-POLE	SCREW	SCREW	358250	1



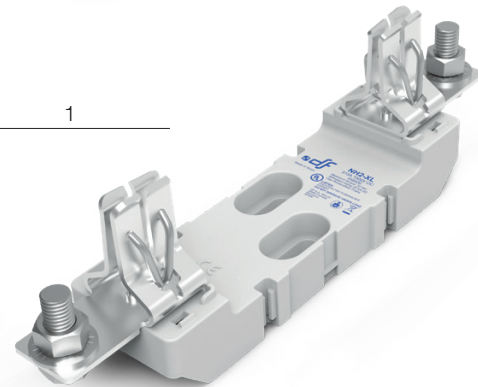
NH2 XL

U **1500V DC**

IN **315A**

STANDARDS

SINGLE-POLE	SCREW	SCREW	358400	1
-------------	-------	-------	---------------	---



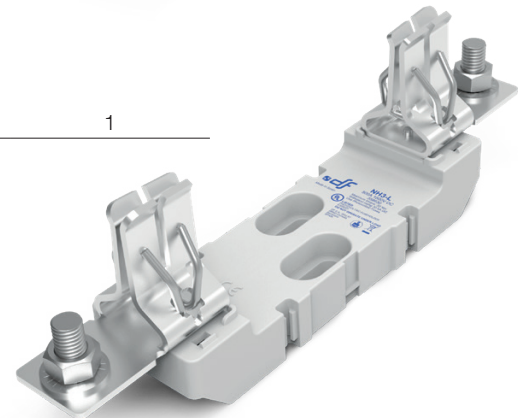
NH3 L

U **1500V DC**

IN **500A**

STANDARDS

SINGLE-POLE	SCREW	SCREW	358630	1
-------------	-------	-------	---------------	---



STANDARDS	DIMENSIONS	ACCESSORIES	ACCESSORIES ASSEMBLY	COMPATIBLE gPV XL NH 1500V DC FUSE LINKS
IEC/EN 60269-1 IEC/EN 60269-2 IEC/EN 60269-6	PAG 46	PAG 18	PAG 49	PAG 08

ST

ST NH
690V/800V AC
fuse bases

Fuse bases for NH fuse-links. Manufactured with a high quality materials. Silver plated copper contacts. Plastic materials with high temperature resistance and self-extinguishable. All the materials are according to the European Directive RoHS. For mounting on DIN/EN rail or with screw fixing. Single-phase or three-pole type. Connection by screws.

Contacts with double spring in order to obtain an optimum operation. Wide range of accessories that enables IP20 protection index: contact covers, fuse link covers and partition walls. Multi-pole units can be made with connection accessories.

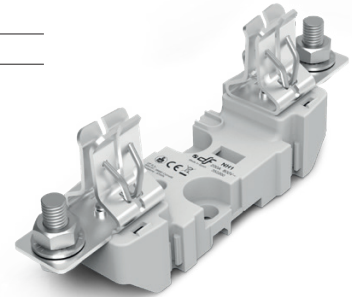
Manufactured according IEC, EN and DIN standards.

NH1

U **690V/800V AC**

In **250A**

POLES	FIXING	CONNECTION	REFERENCE	PACKING Uni / BOX
SINGLE-POLE	DIN RAIL / SCREW	SCREW	352300	3
THREE-POLE	DIN RAIL / SCREW	SCREW	353300	1

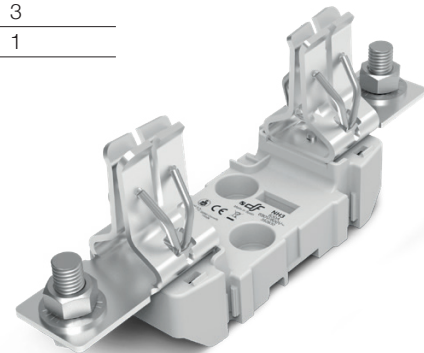


NH3

U **690V/800V AC**

In **630A**

SINGLE-POLE	DIN RAIL / SCREW	SCREW	352630	3
THREE-POLE	DIN RAIL / SCREW	SCREW	353630	1



STANDARDS

IEC/EN 60269-1
IEC/EN 60269-2
DIN 43620

DIMENSIONS

PAG 47

ACCESSORIES

PAG 18

ACCESSORIES ASSEMBLY

PAG 50

COMPATIBLE gg/GL NH 800V AC FUSE LINKS

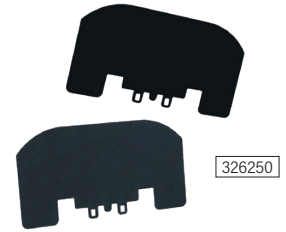
PAG 10

ST | NH ACCESSORIES fuse bases

ST

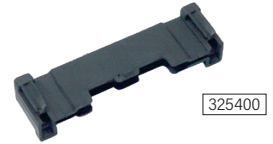
PARTITION WALLS SNAP FIXATION

SIZE	REFERENCE	PACKING Uni / BOX
NH1 (OVER SEPARATOR)	326200	2
NH1 (DIRECTLY TO BODY)	326201	2
NH2	326250	2
NH3	326630	2
NH1XL	326255	2
NH2XL	326405	2
NH3L	326635	2



SEPARATORS FOR MULTIPOLE UNITS

NH1	325250	2
NH1XL - NH2 / NH2XL	325400	2
NH3 - NH3L	325630	2



TERMINAL COVERS

NH1	325005	6
NH1XL	325002	6
NH2 / NH2XL	325003	6
NH3 / NH3L	325007	6



FUSE LINKS COVERS

NH1	325018	3
NH2	325020	3
NH3	325025	3



MICROSWITCHES

NH000...NH3 NH1XL - NH2XL - NH3L	357010	1/12
-------------------------------------	---------------	------



FUSE PULLERS

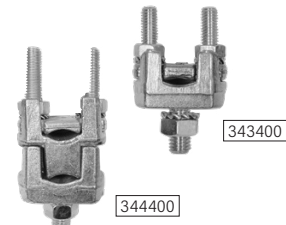
DIMENSIONS | INSTRUCTIONS
PAG 41 | PAG 42

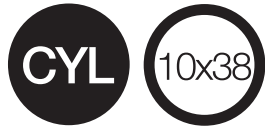
NH00...NH4	340001	1
NH1XL - NH2XL - NH3L	340005	1



TERMINALS

SIZE	CROSS SECTION (mm ²)	CABLE	REFERENCE	PACKING Uni / BOX
1	150/16	1 CABLE	343400	3
2/3	240/50	1 CABLE	343630	3
1	150/25-16	2 CABLES	344400	3
2/3	240/95-50	2 CABLES	344630	3



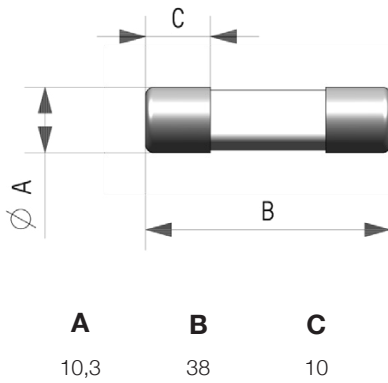


gPV CYLINDRICAL fuse links

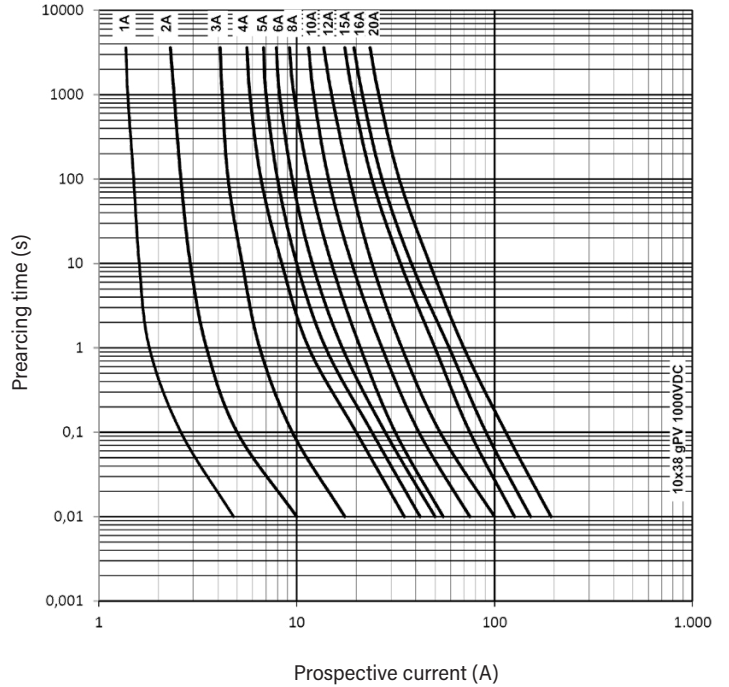
RATED VOLTAGE 1000V DC
RATED CURRENT 1A...20A
BREAKING CAPACITY 30kA



DIMENSIONS



t-I CHARACTERISTICS



POWER DISSIPATION

RATED CURRENT (A)	REFERENCE	POWER DISSIPATION (W @ 0,7 In)	POWER DISSIPATION (W @ In)	PREARcing I ² t (A ² s)	OPERATING I ² t (A ² s)
1	491601	0,31	0,76	0,35	1,30
2	491602	0,78	1,45	0,62	1,00
3	491604	0,66	1,66	1,90	3,10
4	491605	0,64	1,57	6,90	11
5	491606	0,60	1,65	14	22
6	491610	0,77	1,84	24	38
8	491615	0,82	2,00	7	17
10	491620	0,94	2,20	15	38
12	491625	0,98	2,40	27	68
15	491629	1,05	2,65	62	115
16	491630	1,10	2,70	89	165
20	491635	1,33	3,20	158	294

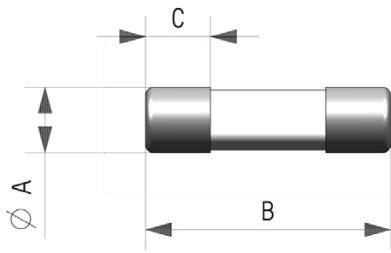


gPV CYLINDRICAL fuse links

RATED VOLTAGE	RATED CURRENT	BREAKING CAPACITY
1100V DC	15A 20A	10kA
1000V DC	25A 32A	30kA

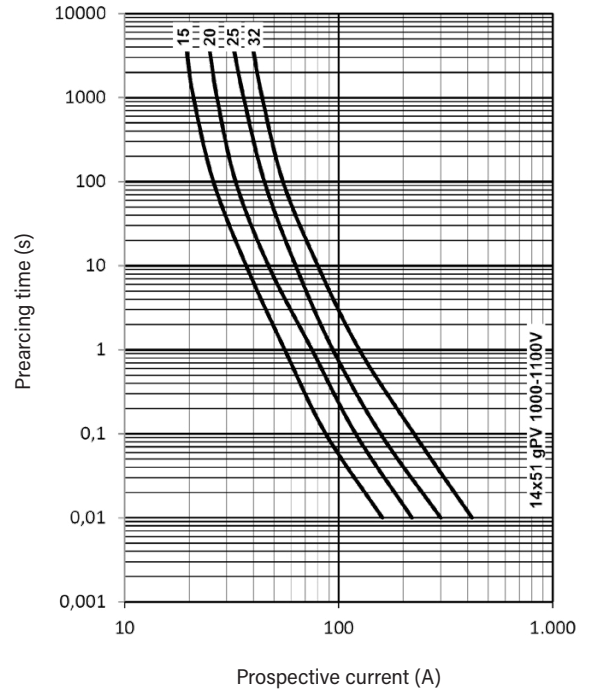


DIMENSIONS



A	B	C
14,3	51	13

t-I CHARACTERISTICS



POWER DISSIPATION

	RATED CURRENT (A)	REFERENCE	POWER DISSIPATION (W @ 0,7 I _n)	POWER DISSIPATION (W @ I _n)	PREARcing I ² t (A ² s)	OPERATING I ² t (A ² s)	
U	1100V DC	15	491647	1,34	3,14	48	112
		20	491648	1,55	3,68	99	367
U	1000V DC	25	491650	1,60	3,80	275	650
		32	491655	2,00	4,70	550	1300

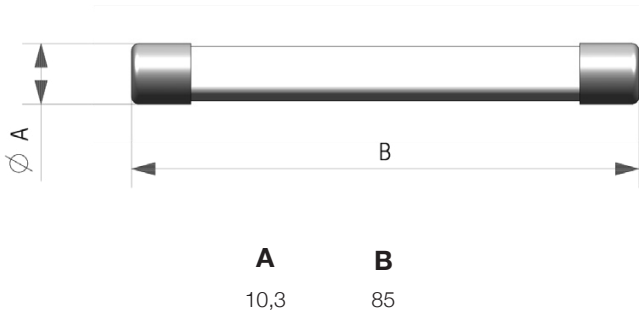


gPV
CYLINDRICAL
fuse links

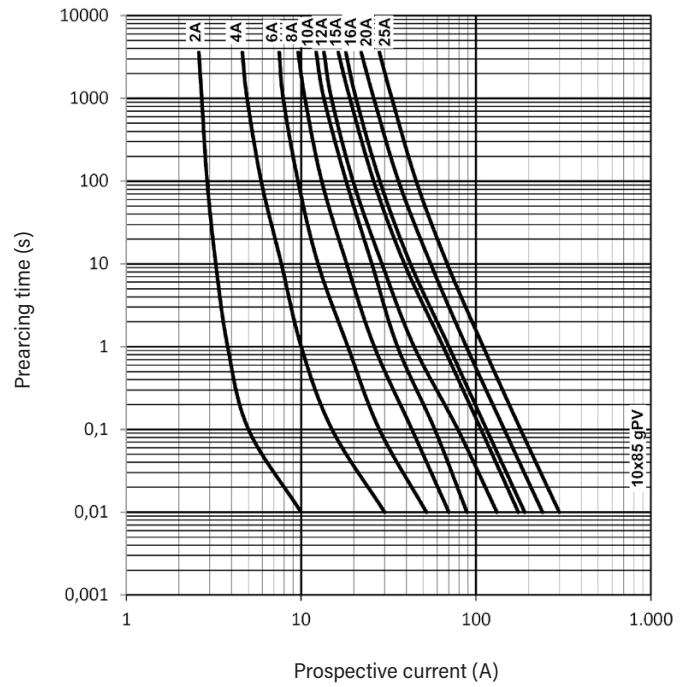
RATED VOLTAGE	RATED CURRENT	BREAKING CAPACITY
1500V DC	2A...16A	30kA
1200V DC	20A 25A	10kA



DIMENSIONS



t-I CHARACTERISTICS



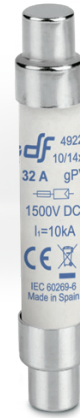
POWER DISSIPATION

U	RATED VOLTAGE	RATED CURRENT	REFERENCE	POWER DISSIPATION	POWER DISSIPATION	PREARcing I ² t	OPERATING I ² t
		(A)		(W @ 0,7 I _n)	(W @ I _n)	(A ² s)	(A ² s)
U	1500V DC	2	492202	1,28	3,2	0,8	1,1
		4	492205	1,16	2,9	13	17
		6	492210	1,04	2,6	65	84
		8	492215	1,13	2,8	175	225
		10	492220	1,36	3,4	44	72
		12	492225	1,56	3,9	78	129
		15	492229	1,79	4,5	121	201
		16	492230	1,92	4,8	175	290
U	1200V DC	20	492235	2,04	5,1	242	478
		25	492240	2,20	5,5	545	1075

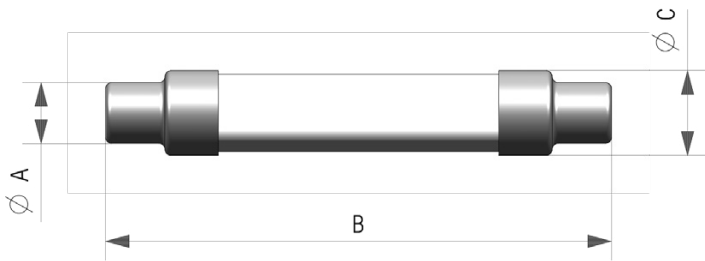


gPV CYLINDRICAL fuse links

RATED VOLTAGE	RATED CURRENT	BREAKING CAPACITY
1500V DC	20A..32A	10kA

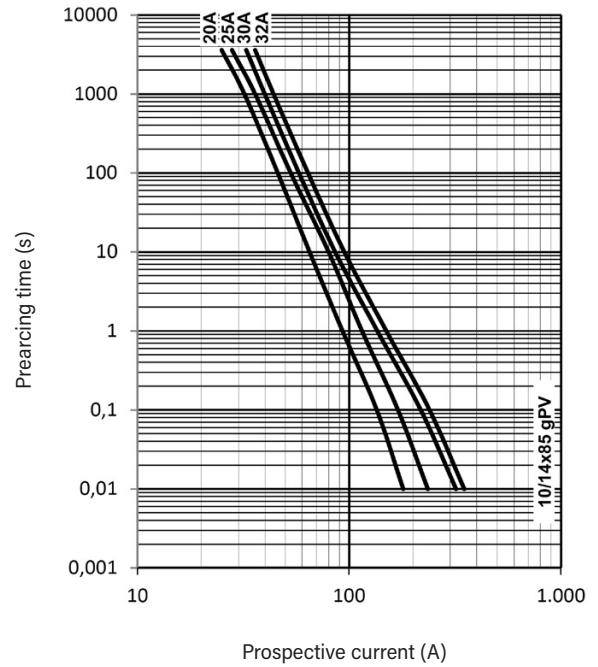


DIMENSIONS



A	B	C
10,3	85	14,3

t-I CHARACTERISTICS



POWER DISSIPATION

RATED CURRENT (A)	REFERENCE	POWER DISSIPATION (W @ 0,7 I _n)	POWER DISSIPATION (W @ I _n)	PREARcing I ² t (A ² s)	OPERATING I ² t (A ² s)
20	492250	2,17	5,44	67	221
25	492255	2,46	6,22	136	452
30	492260	2,66	6,70	220	730
32	492262	3,00	8,00	267	885

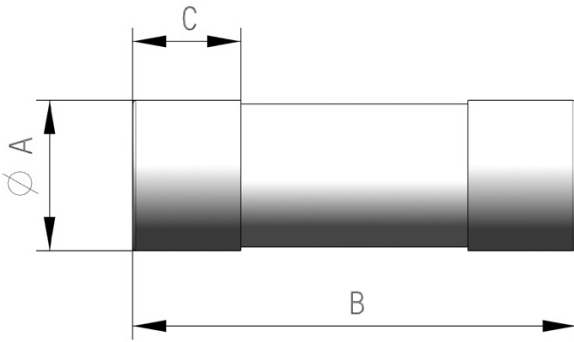


gPV
CYLINDRICAL
fuse links

RATED VOLTAGE 1500V DC
RATED CURRENT 40A...60A
BREAKING CAPACITY 30kA

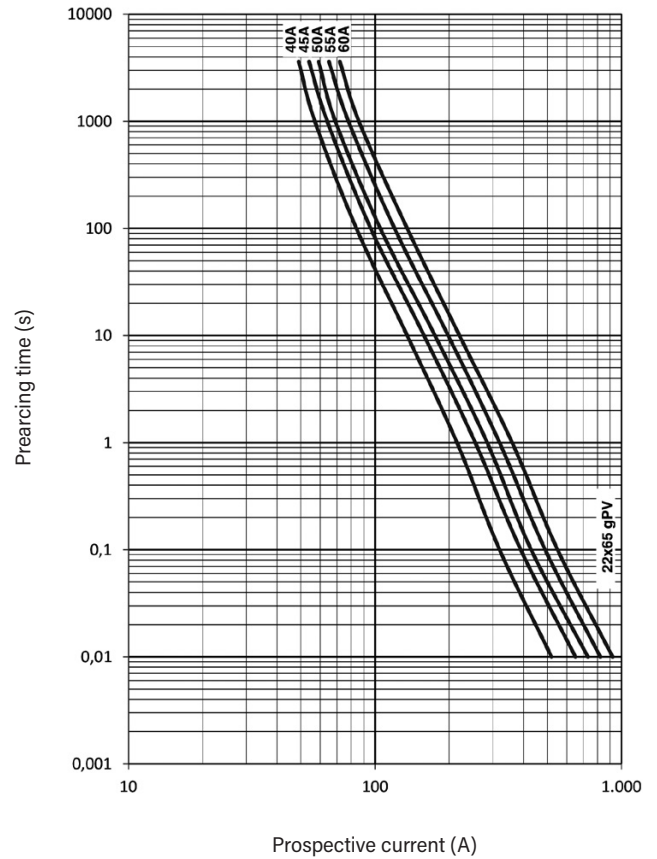


DIMENSIONS



A	B	C
22,3	65	15,5

t-I CHARACTERISTICS



POWER DISSIPATION

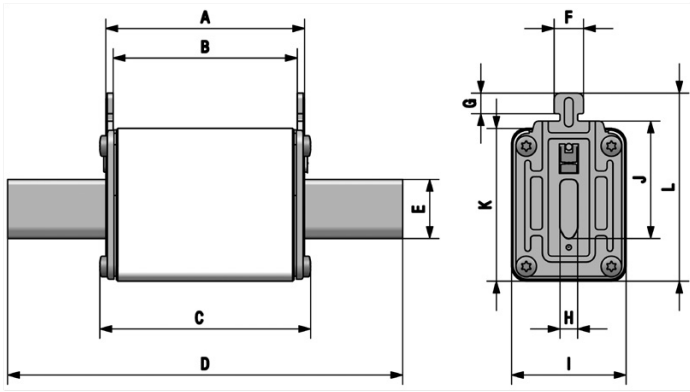
RATED CURRENT (A)	REFERENCE	POWER DISSIPATION (W @ 0,7 In)	POWER DISSIPATION (W @ In)	PREARcing I ² t (A ² s)	OPERATING I ² t (A ² s)
40	492270	3,80	9,5	590	1.355
45	492272	3,80	9,5	1.050	2.400
50	492275	4,00	10,0	1.330	3.050
55	492278	4,70	11,7	1.325	3.100
60	492280	4,95	12,5	1.800	3.900



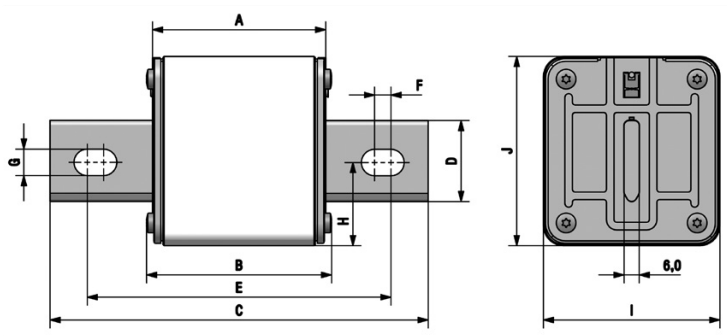
gPV NH 1000V DC fuse links

RATED VOLTAGE	RATED CURRENT	BREAKING CAPACITY
1000V DC	25A...400A	30kA

DIMENSIONS



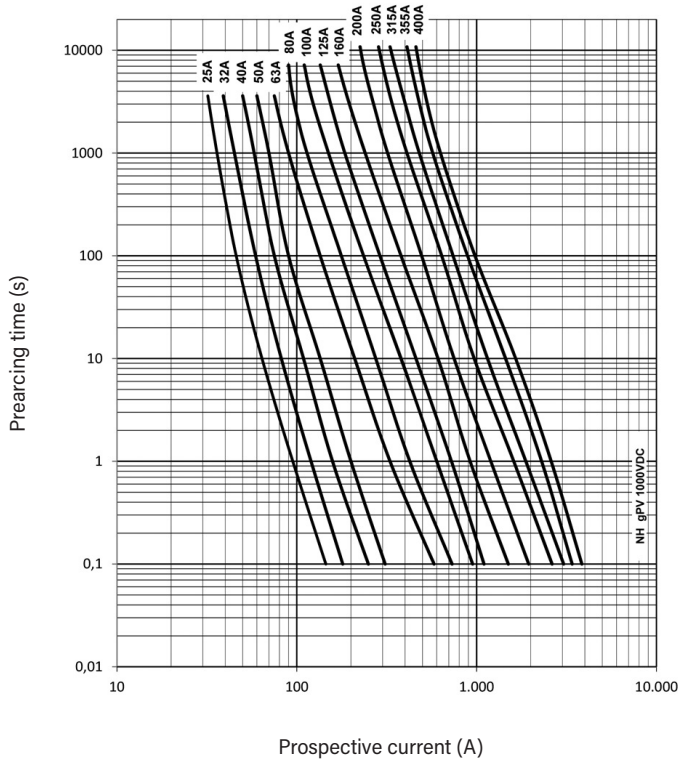
	A	B	C	D	E	F	G	H	I	J	K	L
NH1	68	62	71,5	135	20	10	9,5	6	39	40	52	64
NH2	68	62	71,5	150	25	10	9,5	6	53	48	60	72
NH3	68	62	73	150	32	10	9,5	6	70	60	75	87



	A	B	C	D	E	F	G	H	I	J
NH1	68	71,5	135	20	113	9	8,5	25,6	39	52,5
NH2	68	71,5	150	25	118	9	10,5	27	53	60,5
NH3	68	73	150	32	120	6,5	10,5	33	70	75

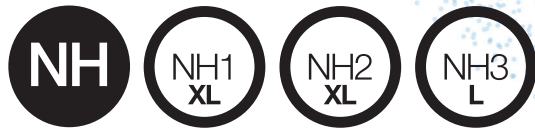


t-I CHARACTERISTICS



POWER DISSIPATION

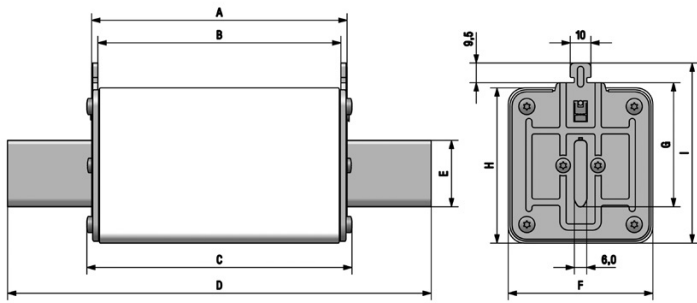
	RATED CURRENT (A)	REFERENCE	POWER DISSIPATION (W @ 0,7 In)	POWER DISSIPATION (W @ In)	PREARcing I ² t (A ² s)	OPERATING I ² t (A ² s)
	25	373210 373210 B	5,2	12,5	62	94
	32	373215 373215 B	6,3	15,5	122	184
	40	373225 373225 B	6,7	16,6	302	454
	50	373230 373230 B	7,5	18	562	844
	63	373235 373235 B	8,2	20	1.210	1.815
	80	373240 373240 B	10	27	2.250	3.375
	100	373245 373245 B	11	28	4.000	6.000
	125	373250 373250 B	12,5	32	6.500	9.700
	160	373255 373255 B	13,5	34,0	9.200	16.600
200	373260 373260 B	12,5	30,0	19.900	38.300	
	200	373350 373350 B	11,4	28,0	18.700	36.400
	250	373360 373360 B	13,0	33,3	36.800	71.500
	200	373425 373425 B	19,5	48,0	21.700	31.700
	250	373435 373435 B	20,5	51,5	41.000	60.000
	315	373445 373445 B	26,2	66,0	76.000	111.500
	355	373450 373450 B	18,0	46,5	74.700	130.700
	400	373455 373455 B	20,0	51,0	104.400	182.600



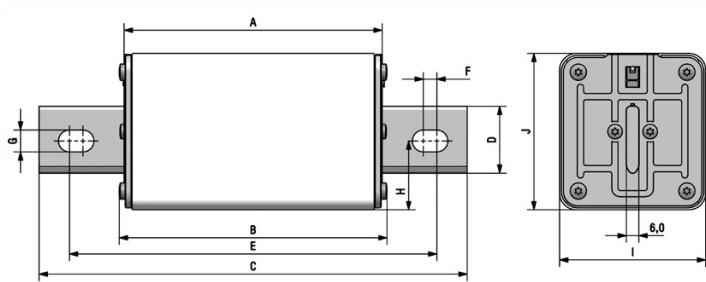
gPV NH XL 1500V DC fuse links

RATED VOLTAGE	RATED CURRENT	BREAKING CAPACITY
1500V DC	40A...400A	30kA

DIMENSIONS



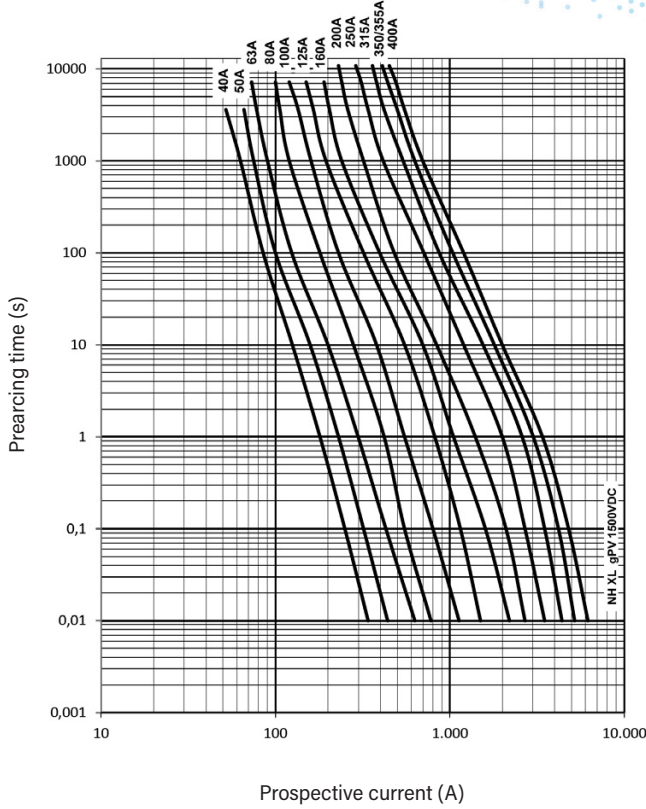
	A	B	C	D	E	F	G	H	I
NH1XL	126	120	129	191	20	39	40	52,5	64,5
NH2XL	122,6	117,6	126,7	205	25	53	48	60,5	72
NH3L	123,6	117,6	128,3	205	32	70	60	75	87



	A	B	C	D	E	F	G	H	I	J
NH1XL B	126	129	191	20	170,5	9	8,5	25,6	39	52,5
NH2XL B	122,6	126,7	205	25	173	9	10,5	27	53	60,5
NH3L B	123,6	128,3	205	32	176	6,5	10,5	33	70	75

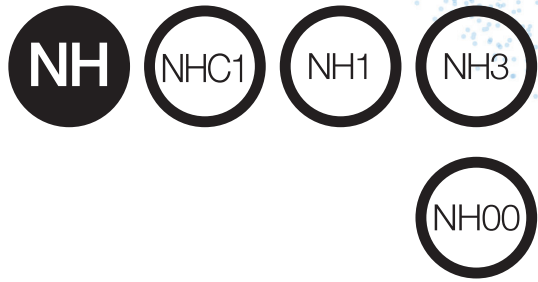


t-I CHARACTERISTICS



POWER DISSIPATION

	RATED CURRENT	REFERENCE		POWER DISSIPATION	POWER DISSIPATION	PREARcing I ² t	OPERATING I ² t
	(A)			(W @ 0,7 In)	(W @ In)	(A ² s)	(A ² s)
	40	372225	372225 B	6,3	15	260	490
	50	372230	372230 B	7,2	18	560	1.170
	63	372235	372235 B	7,6	19	1.160	2.460
	80	372240	372240 B	10	25	1.760	3.720
	100	372245	372245 B	10,4	26	3.970	8.380
	125	372250	372250 B	12	30	7.070	14.900
	160	372255	372255 B	15	38	13.360	28.180
	200	372260	372260 B	19	47	24.850	52.400
	200	372350	372350 B	18	45	24.850	52.360
	250	372360	372260 B	21	52	42.000	88.500
	315	372445	372445 B	25	61	114.000	172.080
	350	372448	372448 B	26	66	159.230	240.350
	355	372450	372450 B	27	68	159.230	240.350
	400	372455	372455 B	30	75	212.000	320.000



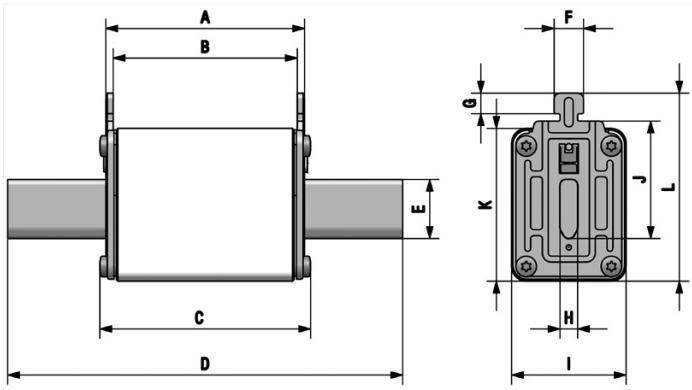
gG / gL
NH 800V AC
fuse links

RATED VOLTAGE	RATED CURRENT	BREAKING CAPACITY
800V AC	25A...400A	80kA

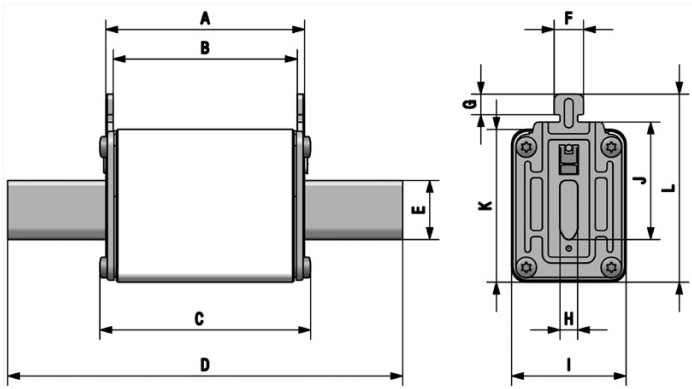
gS
NH 800V AC
fuse links

RATED VOLTAGE	RATED CURRENT	BREAKING CAPACITY
800V AC	25A...100A	120kA

DIMENSIONS



	A	B	C	D	E	F	G	H	I	J	K	L
NHC1	68	62	70,5	135	15	10	9,5	6	29	40	47	64
NH1	68	62	71,5	135	20	10	9,5	6	39	40	52	64
NH3	68	62	73	150	32	10	9,5	6	70	60	75	87

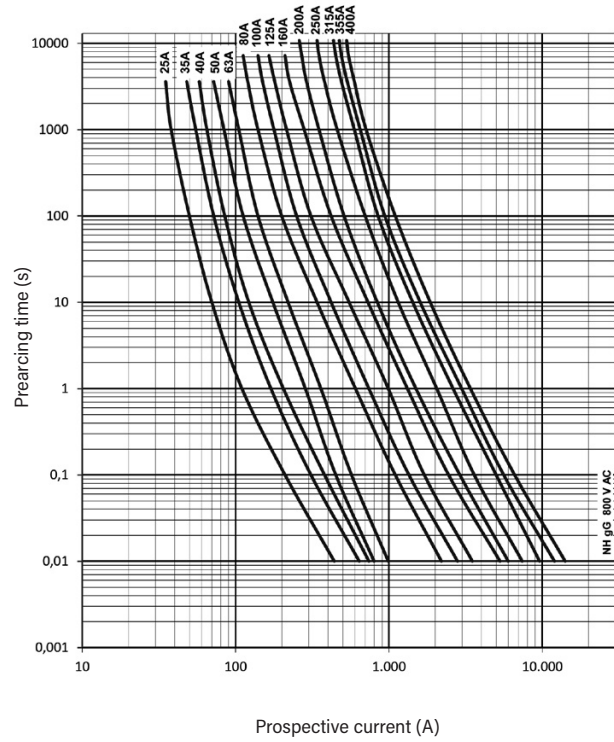


	A	B	C	D	E	F	G	H	I	J	K	L
NH00	49	44	52	78,5	15	10	9,5	6	29	35	47	59



t-I CHARACTERISTICS

POWER DISSIPATION



NHC1

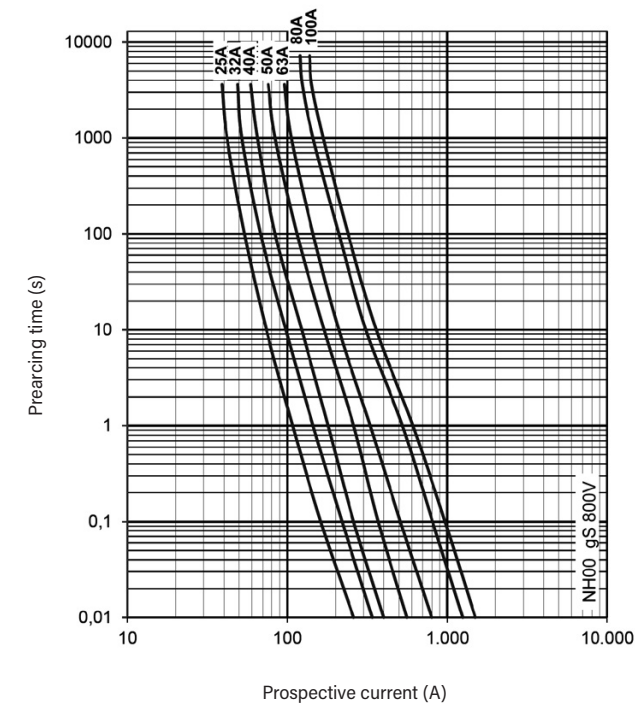
RATED CURRENT (A)	REFERENCE	POWER DISSIPATION (W)	PREARCING I ² t (A ² s)	OPERATING I ² t (A ² s 800V ~)
25	385210	4,1	1.150	2.770
35	385220	4,8	2.780	6.700
40	385225	5,0	4.600	11.080
50	385230	5,3	4.680	11.300
63	385235	6,1	9.400	22.670

NH1

80	385240	10,0	16.550	33.855
100	385245	12,0	32.430	66.355
125	385250	14,0	59.730	122.215
160	385255	18,0	95.300	195.000

NH3

200	385425	21,0	140.150	245.000
250	385435	25,0	241.500	422.000
315	385445	34,5	395.000	698.000
355	385450	37,0	539.000	1.230.000
400	385455	43,0	760.000	1.734.000



NH00

RATED CURRENT (A)	REFERENCE	POWER DISSIPATION (W)		PREARCING I ² t (A ² s)	OPERATING I ² t (A ² s 800V ~)
		0,8 In	In		
25	369030	2,4	4,1	100	385
32	369035	2,6	4,6	260	990
40	369045	3,3	5,6	400	1.540
50	369050	3,7	6,1	790	3.025
63	369055	4,2	6,8	1.620	6.170
80	369060	4,8	8,3	3.170	12.100
100	369065	6,8	10,9	5.200	19.900

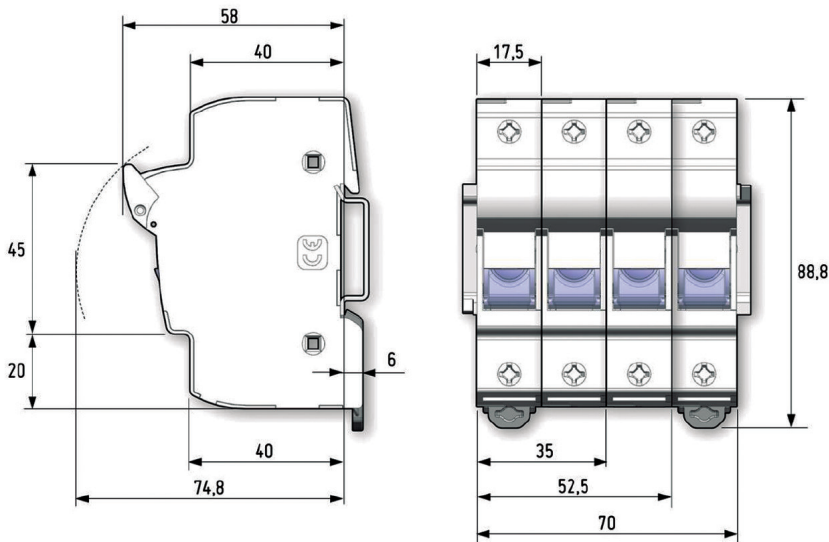


PMX CYLINDRICAL fuse holders

RATED VOLTAGE	RATED CURRENT	PROTECTION INDEX
1000V DC	32A	IP20
690V AC		



DIMENSIONS



ACCESSORIES

REFERENCE	DESCRIPTION	PACKING
		Uni /BOX
480005	PINS FOR MULTIPOLE ASSEMBLY	12
485050	HANDLE TIES FOR MULTIPOLE ASSEMBLY	12
485051	LOCK SUPPORT	5
485052	SPECIAL IP20 PROTECTION ACCESSORY	24
485053	PHASE SEPARATOR ACCESSORY	12
485656	SCREWS PROTECTION ACCESSORY	20

PMX 10x38 | **PMX**
CYLINDRICAL
fuse holders
ACCESSORIES

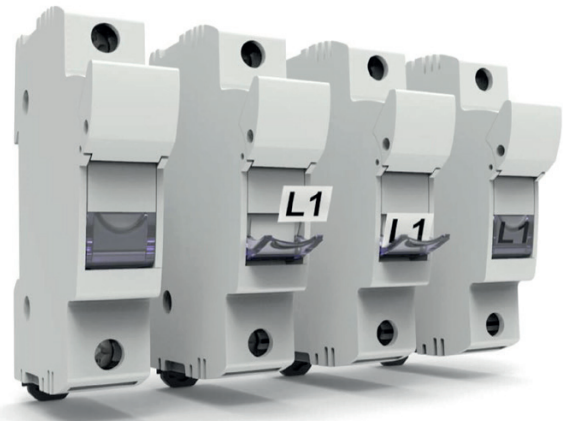
MULTIPOLAR ASSEMBLY

Standard system by DF, 2 clips and 1 pin for each union between poles



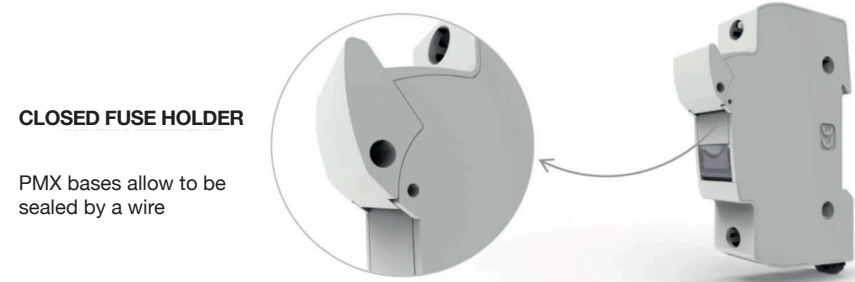
IDENTIFICATION BY LABEL

Open the label-holder part when the fuse holder is totally closed or totally open, put on the label and close



LOCKING MEANS A PADLOCK

Systems to avoid the operation and connection when the fuse holder is open or closed

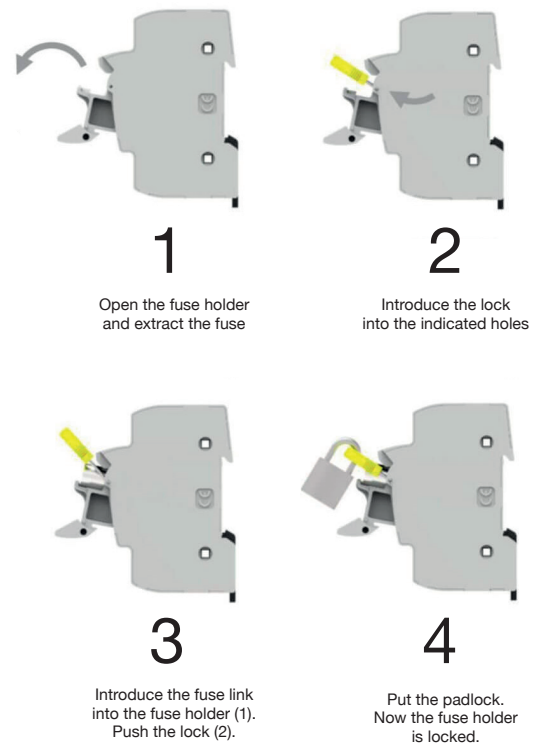


CLOSED FUSE HOLDER

PMX bases allow to be sealed by a wire

OPEN FUSE HOLDER

PMX lock accessory prevents the unauthorized use of these fuse holders



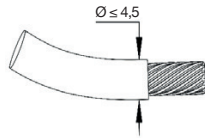


PMX
CYLINDRICAL
fuse holders

ACCESSORIES

SPECIAL IP20 PROTECTION

The accessory must be positioned in the wire entries, if it's necessary to achieve the IP20 degree of protection with thin wires. Manual assembly.



To obtain an IP20 rating with cable protection of $\varnothing \leq 4.5\text{mm}$, use the special protection accessory

SCREW'S PROTECTION ACCESSORY

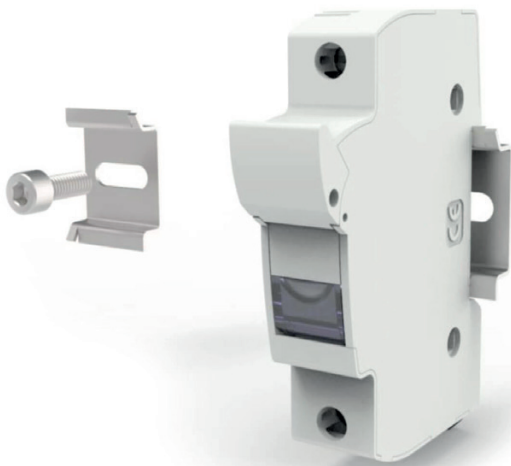
Protection accessory to avoid the screws manipulation and improve the protection degree

Manual assembly



SCREW FIXATION

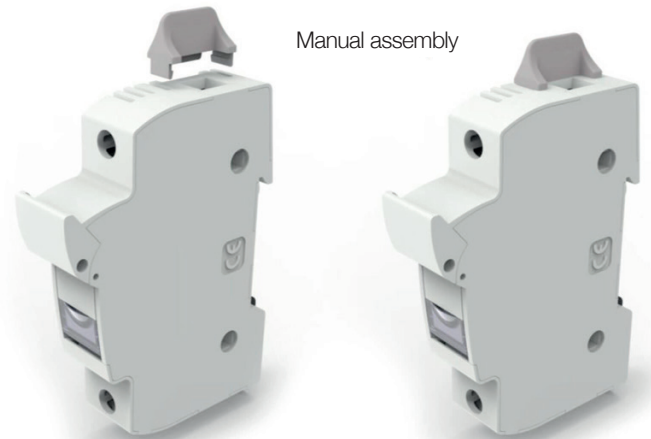
First mount the accessory with screws, then mount the fuse holder (there are available different accessories depending the number of the fuse holder)



PHASE SEPARATOR

The accessory increases the distance between phases in multipolar assemblies

Manual assembly



REFERENCE	SIZE (mm)
485650	25
485651	50
485652	75
485653	100
485654	125
485655	175

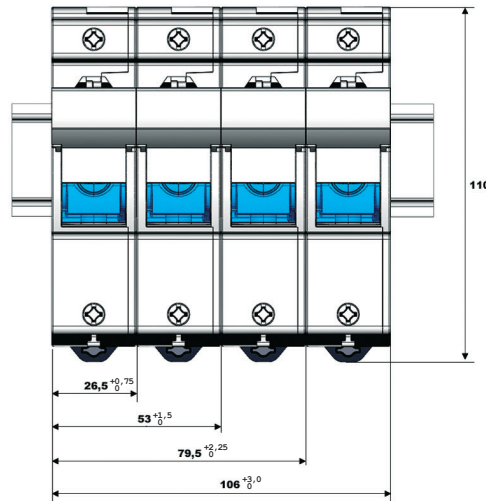
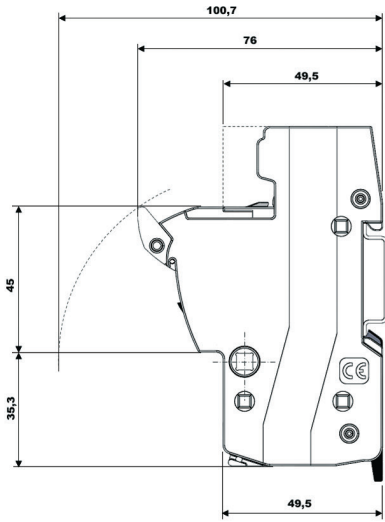


PMX CYLINDRICAL fuse holders

RATED VOLTAGE	RATED CURRENT	PROTECTION INDEX
1000V DC	50A	IP20
690V AC		



DIMENSIONS



ACCESSORIES

REFERENCE	DESCRIPTION	PACKING
		Uni /BOX
480005	PINS FOR MULTIPOLE ASSEMBLY	12
485356	HANDLE TIES FOR MULTIPOLE ASSEMBLY	12
485258	LOCK SUPPORT	5
485266	SPECIAL IP20 PROTECTION ACCESSORY	12
485656	SCREWS PROTECTION ACCESSORY	12
485271	SPECIAL ACCESSORY SCREW CONNECTION	12

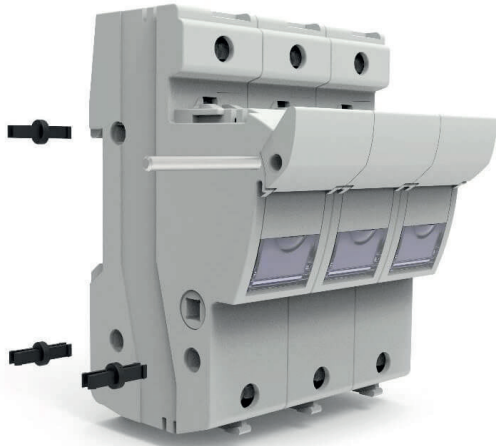


PMX
CYLINDRICAL
fuse holders

ACCESSORIES

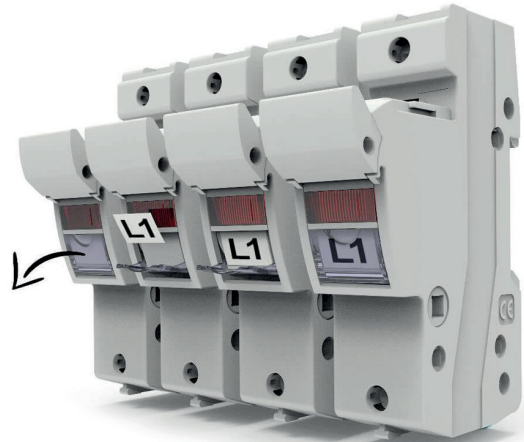
MULTIPOLAR ASSEMBLY

Standard system by DF, 3 clips and 1 pin for each union between poles



IDENTIFICATION BY LABEL

Open the label-holder part when the fuse holder is totally closed or totally open, put on the label and close



LOCKING MEANS A PADLOCK

To avoid the operation and connection when the fuse holder is open, put on the accessory "Padlock support" sliding it for the guides, and covering the fuse link zone.
(It's possible the use with or without fuse link)

Introduce the padlock trough the symmetrical holes and close it.



PMX

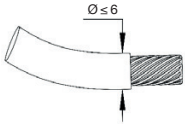
14x51

PMX
CYLINDRICAL
fuse holders

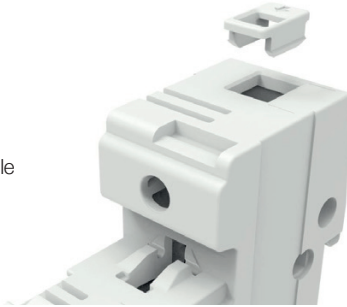
ACCESSORIES

SPECIAL IP20 PROTECTION

The accessory must be positioned in the wire entries, if it's necessary to achieve the IP20 degree of protection with thin wires. Manual assembly.



To obtain an IP20 rating with cable protection of $\varnothing \leq 6\text{mm}$, use the special protection accessory

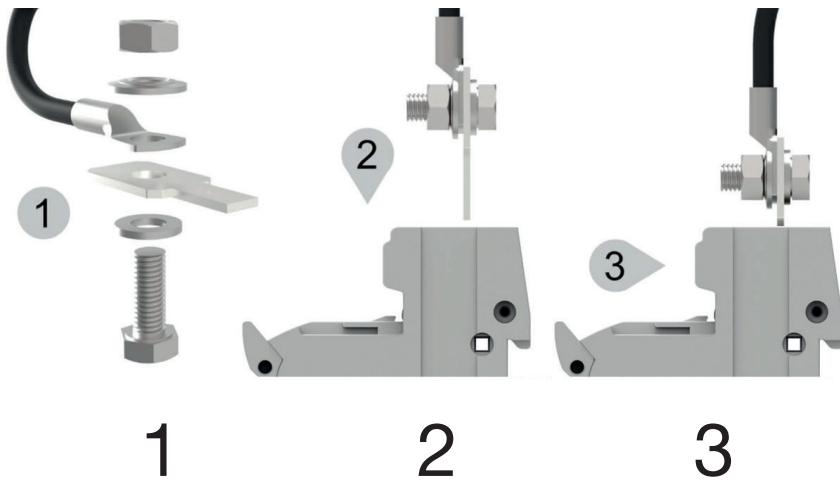


SCREW'S PROTECTION ACCESSORY

Protection accessory to avoid the screws manipulation and improve the protection degree



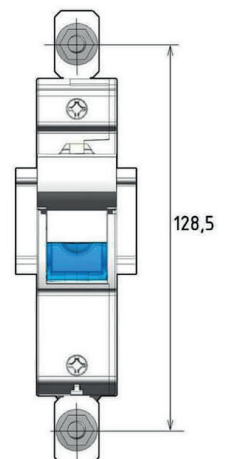
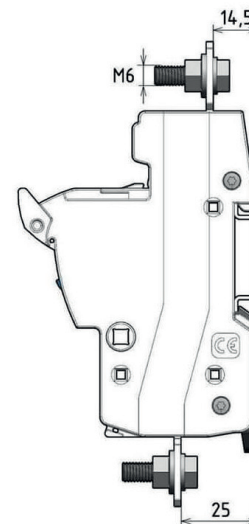
PMX-14 SPECIAL ACCESSORY SCREW CONNECTION



1 Mount the accessory in the wire (6Nm)

2 Wiring in the fuse holder

3 Apply tightening torque (2,5...3 Nm)



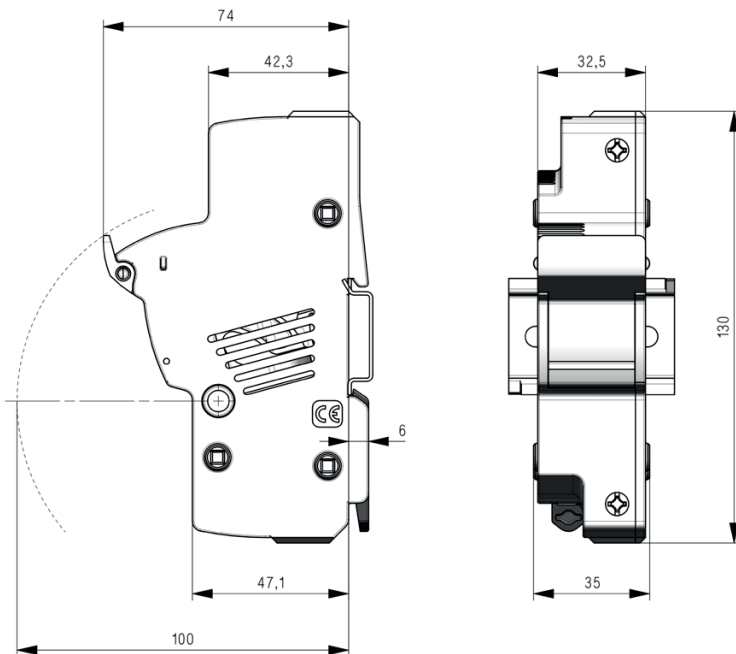


PMX CYLINDRICAL fuse holders

RATED VOLTAGE	RATED CURRENT	PROTECTION INDEX
1500V DC	100A	IP20
1000V AC		



DIMENSIONS



ACCESSORIES

REFERENCE	DESCRIPTION	PACKING
		Uni /BOX
480005	PINS FOR MULTIPOLE ASSEMBLY	12
485356	HANDLE TIES FOR MULTIPOLE ASSEMBLY	12
485266	SPECIAL IP20 PROTECTION ACCESSORY	12
485371	SPECIAL ACCESSORY SCREW CONNECTION	12

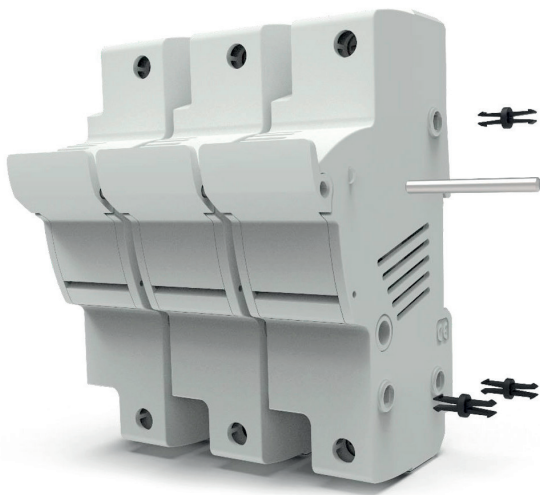


PMX
CYLINDRICAL
fuse holders

ACCESSORIES

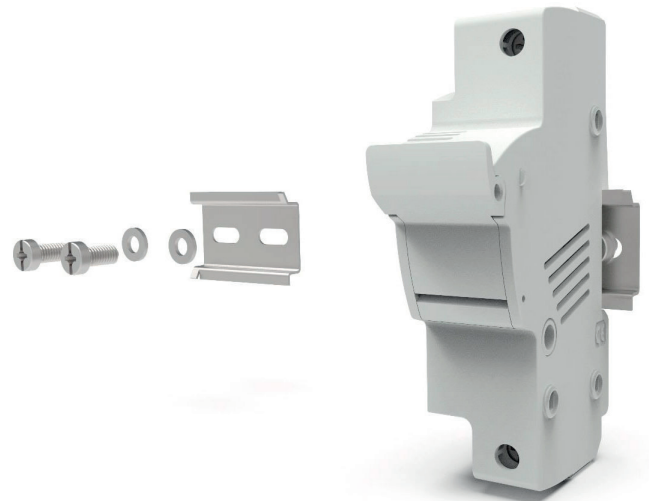
MULTIPOLAR ASSEMBLY

Standard system by DF, 3 clips and 1 pin for each union between poles



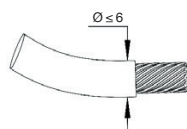
SCREW FIXATION

First mount the accessory with screws, then mount the fuse holder
(there are available differents accessories depending the number of the fuse holder)

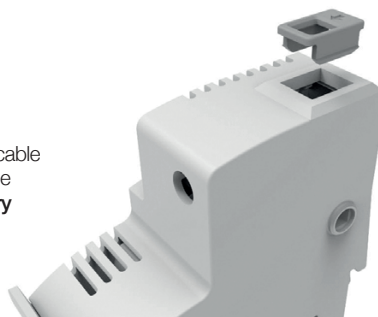


SPECIAL IP20 PROTECTION

The accessory must be positioned in the wire entries, if it's necessary to achieve the IP20 degree of protection with thin wires. Manual assembly.



To obtain an IP20 rating with cable protection of $\varnothing \leq 6\text{mm}$, use the **special protection accessory**



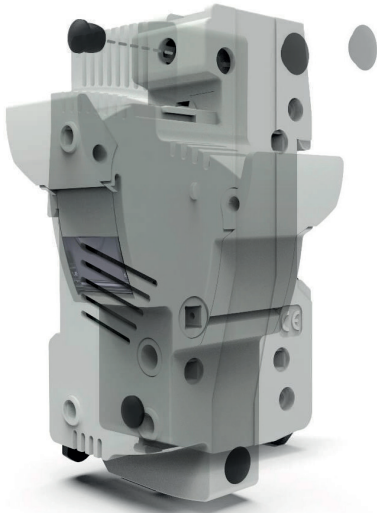


PMX
CYLINDRICAL
fuse holders

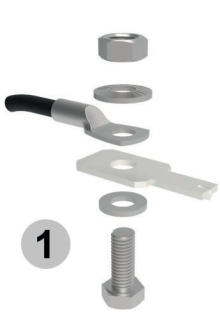
ACCESSORIES

SCREW'S PROTECTION ACCESSORY

Protection accessory to avoid the screws manipulation and improve the protection degree. Manual assembly.



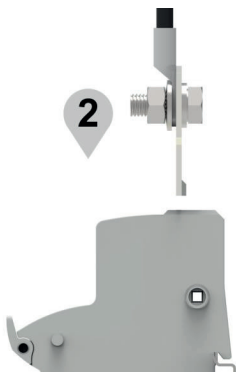
PMX-22 SPECIAL ACCESSORY SCREW CONNECTION



1

1

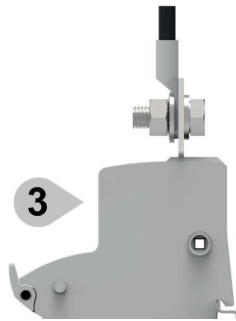
Mount the accessory
in the wire or busbar
(10Nm)



2

2

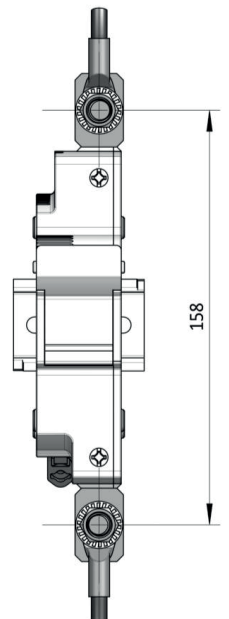
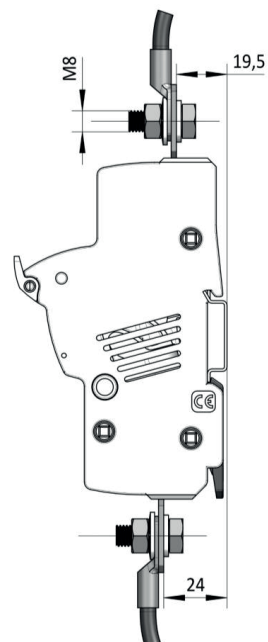
Wiring in the fuse holder



3

3

Apply tightening torque
(4Nm)



158



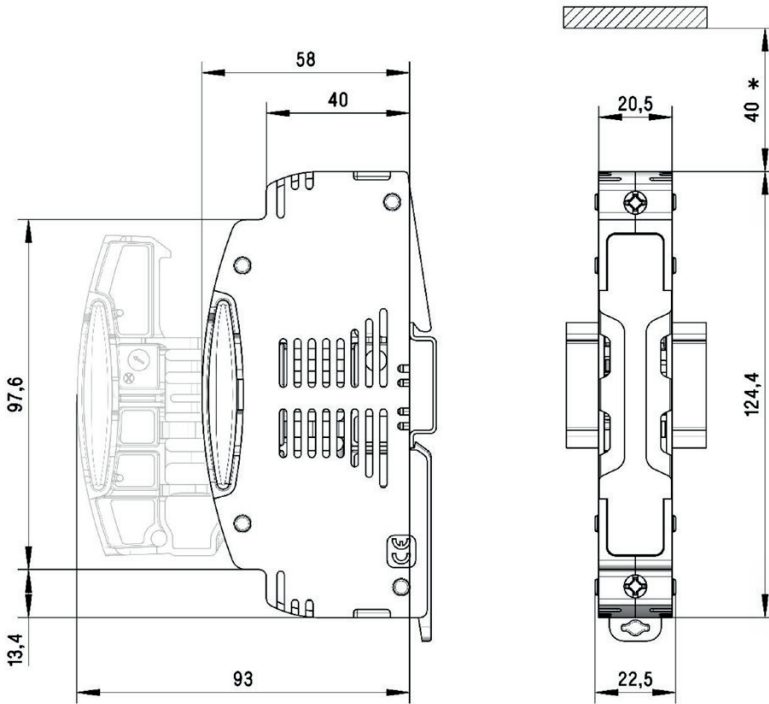
PML_e CYLINDRICAL fuse holders

RATED VOLTAGE	RATED CURRENT	PROTECTION INDEX
1000V DC	32A	IP20
1500V DC		

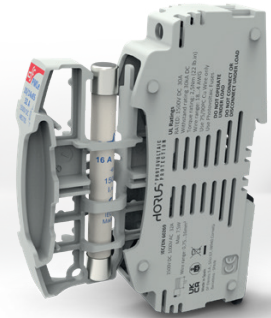


**PATENTED
DESIGN**

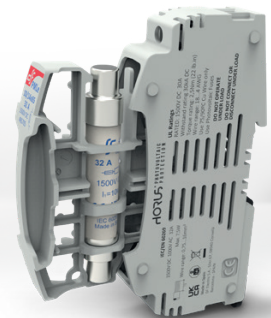
DIMENSIONS



* Recommended mounting free space



10x85 position



10/14x85 position

ACCESSORIES

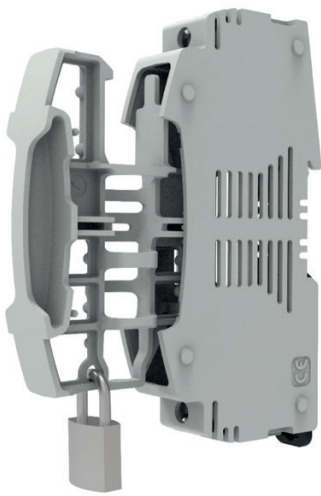
REFERENCE	DESCRIPTION	PACKING
		Uni/BOX
485052	SPECIAL IP20 PROTECTION ACCESSORY	24
485656	SCREW'S PROTECTION ACCESSORY	20



PML_e CYLINDRICAL fuse holders ACCESSORIES

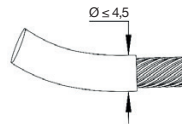
LOCK OF THE FUSE HOLDER

Systems to avoid the operation and connection



SPECIAL IP20 PROTECTION

The accessory must be positioned in the wire entries, if it's necessary to achieve the IP20 degree of protection with thin wires

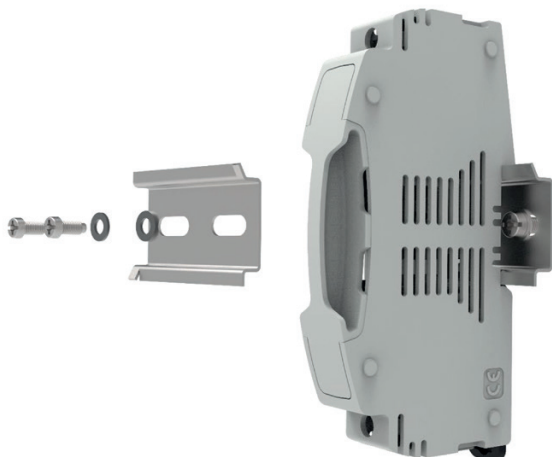


To obtain an IP20 rating with cable protection of $\varnothing \leq 4.5\text{mm}$, use the special protection accessory



SCREW FIXATION ACCESSORY

First mount the accessory with screws, then mount the fuse holder (there are available different accessories depending on the number of the fuse holder)



SCREW'S PROTECTION ACCESSORY

Protection accessory to avoid the screws manipulation and improve the protection degree





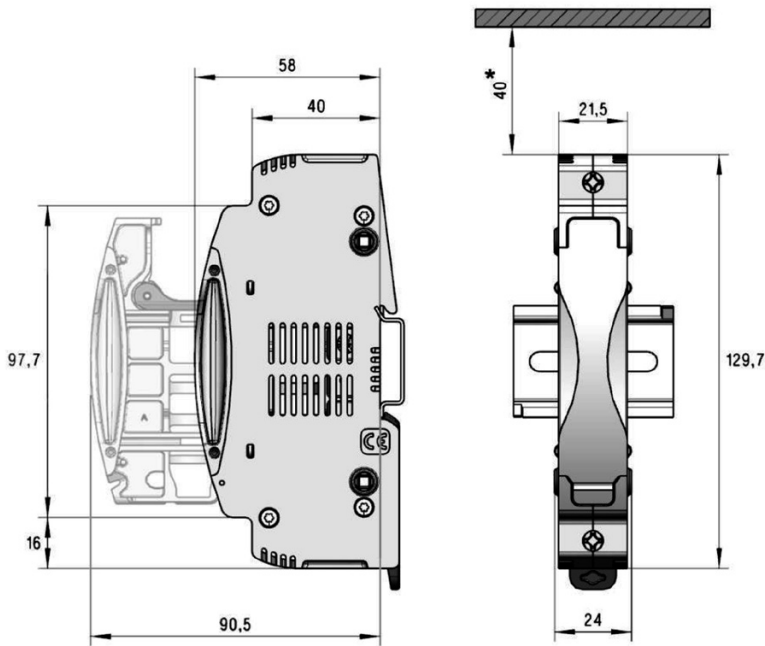
PML CYLINDRICAL fuse holders

RATED VOLTAGE	RATED CURRENT	PROTECTION INDEX
1000V DC	32A	IP20
1500V DC		



**PATENTED
DESIGN**

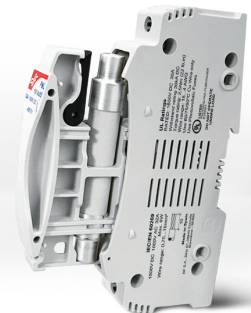
DIMENSIONS



* Recommended minimum mounting free space



10x85 position



10/14x85 position

ACCESSORIES

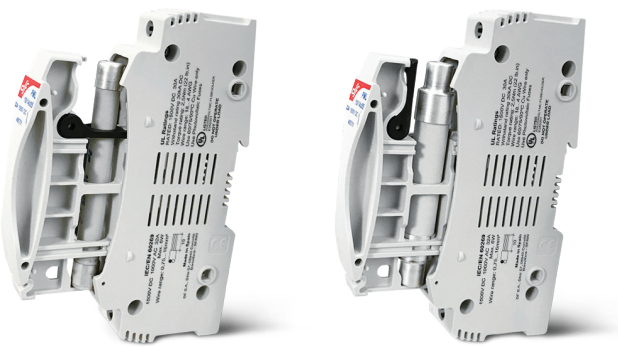
REFERENCE	DESCRIPTION	PACKING
		Uni/BOX
480005	PINS FOR MULTIPOLE ASSEMBLY	12
485050	HANDLE TIES FOR MULTIPOLE ASSEMBLY	12
485051	LOCK ACCESSORY	5
485052	SPECIAL IP20 PROTECTION ACCESSORY	24
485053	PHASE SEPARATOR ACCESSORY	12
485656	SCREWS PROTECTION ACCESSORY	20



PML CYLINDRICAL fuse holders

ACCESSORIES

FUSE LINK SIZE SELECTOR



**10x85
POSITION**

Moving part allows the use of 10x85 and 10/14x85 fuselinks



**10/14x85
POSITION**

MULTIPOLAR ASSEMBLY

Standard system by DF: 2 clips and 2 pins for each union between poles.
Recommended maximum number of linkable poles: 4



Handle tie

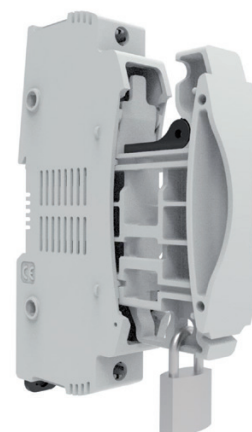
Assembly pin

LOCK OF THE FUSE HOLDER

Systems to avoid the operation and connection when the fuse holder is open or closed



Sealed by wire



System lock that avoids the unauthorized use of the fuseholder



PML CYLINDRICAL fuse holders ACCESSORIES

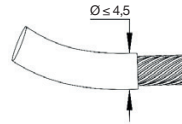
FREE SPACE FOR LABELING

Green zones



SPECIAL IP20 PROTECTION

The accessory must be positioned in the wire entries, if it's necessary to achieve the IP20 degree of protection with thin wires

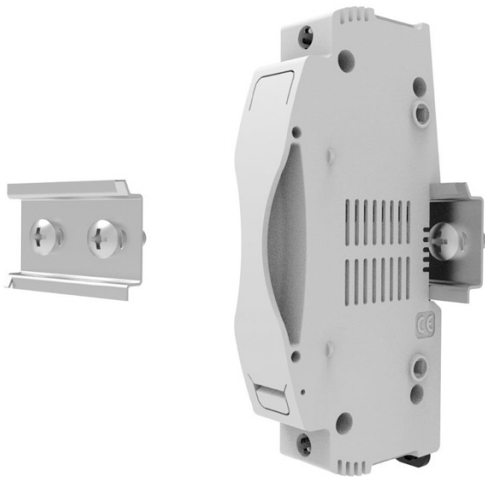


To obtain an IP20 rating with cable protection of $\text{Ø} \leq 4.5\text{mm}$, use the **special protection accessory**



SCREW FIXATION ACCESSORY

First mount the accessory with screws, then mount the fuse holder (there are available different accessories depending the number of the fuse holder)



SCREW'S PROTECTION ACCESSORY

Protection accessory to avoid the screws manipulation and improve the protection degree



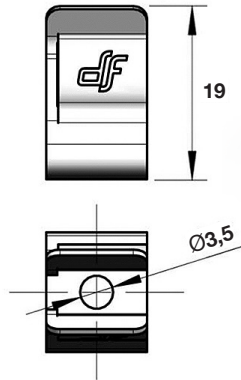
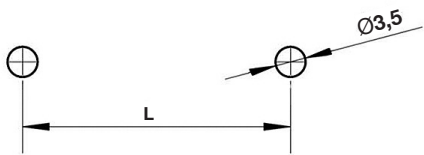


CLIP CONTACT CYLINDRICAL Ø10 fuse links

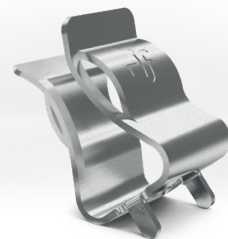
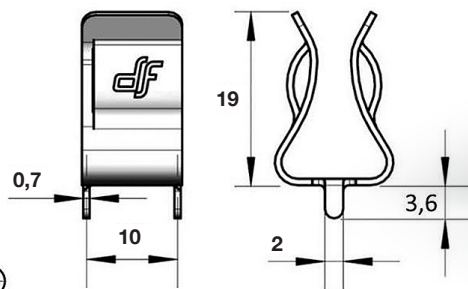
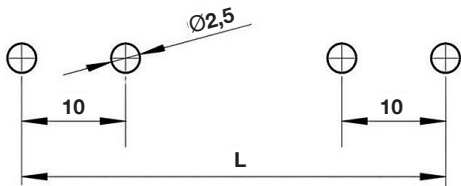
	RATED VOLTAGE	RATED CURRENT	RATED POWER DISSIPATION
UP TO	1000V DC	25A	4W
	1500V DC		

DIMENSIONS

	L (mm)
10x38	32
10x85	79,6



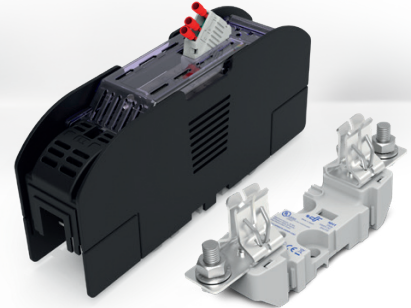
	L (mm)
10x38	42
10x85	89,6



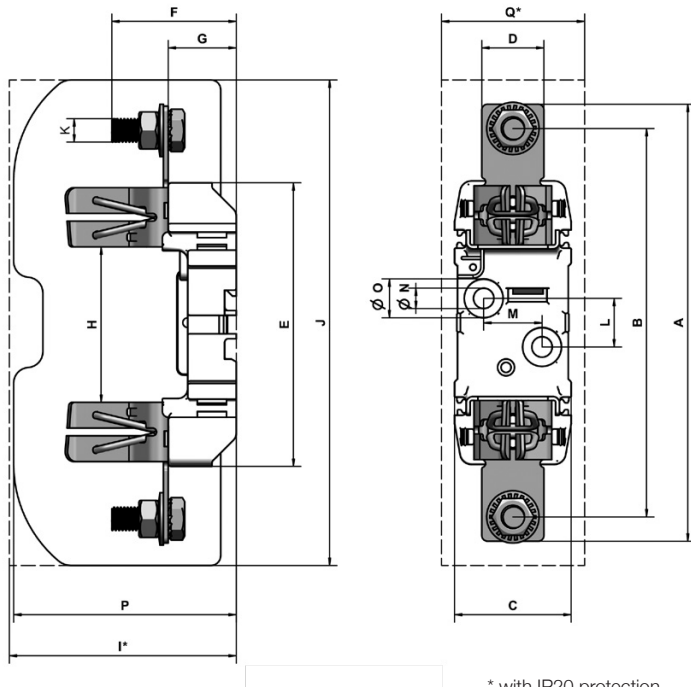


ST NH 1000V DC fuse bases

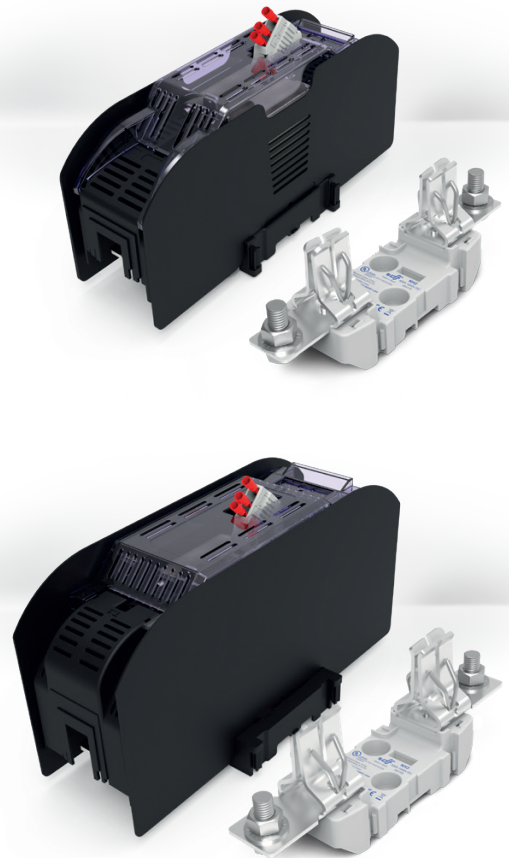
RATED VOLTAGE	RATED CURRENT	PROTECTION INDEX
1000V DC	250A ^{NH1}	IP00 IP20
	400A ^{NH2}	
	500A ^{NH3}	



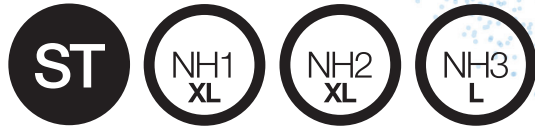
DIMENSIONS



* with IP20 protection



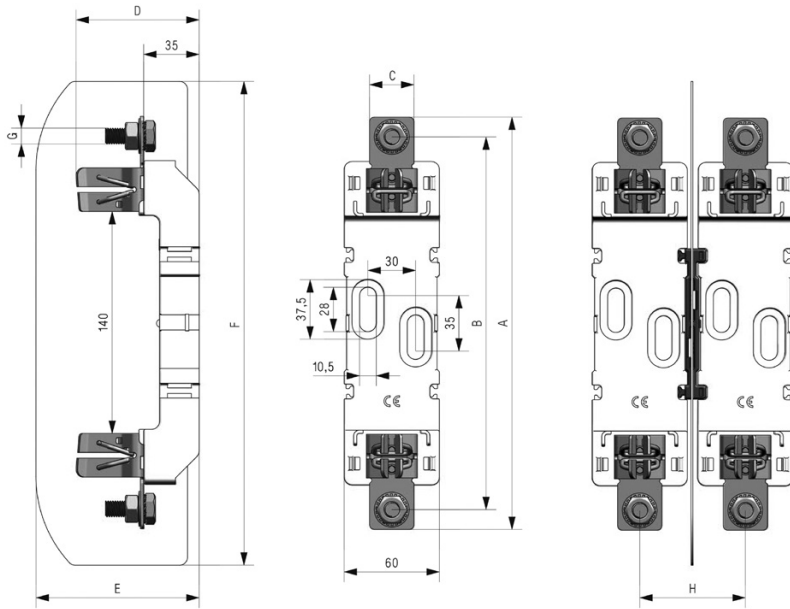
	A	B	C	D	E	F	G	H	I	J	K	L	M	N	O	P	Q
NH1	200	175	48	28	146	77,5	35	80	107	230	M10	25	30	10,5	20	107	54
NH2	225	200	60	32	146	88	35	80	123	250	M12	25	30	10,5	20	114,5	83
NH3	240	210	60	38	146	97	35	80	143	270	M12	25	30	10,5	20	143	116



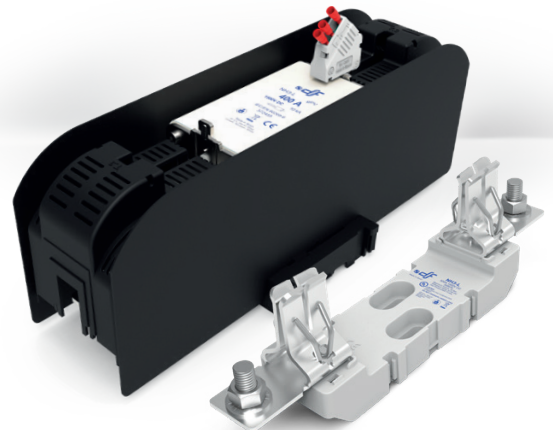
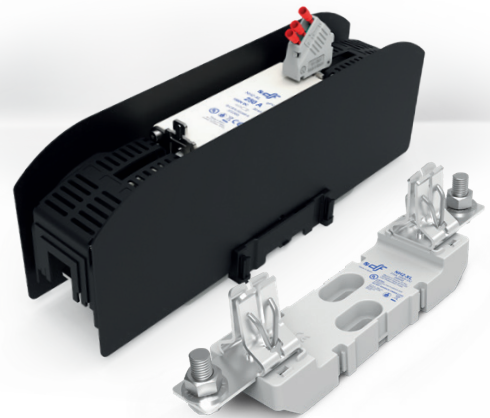
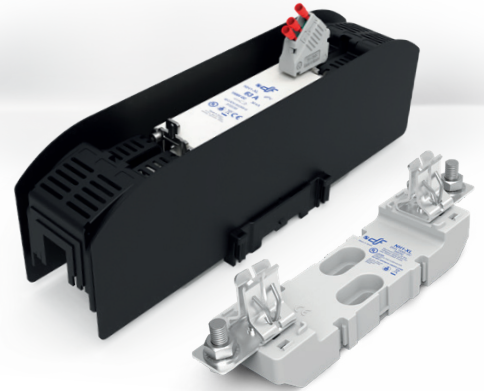
ST NH XL 1500V DC fuse bases

RATED VOLTAGE	RATED CURRENT	PROTECTION INDEX
1500V DC	200A NH1^{XL}	IP00 IP20
	315A NH2^{XL}	
	500A NH3^{L}	

DIMENSIONS



	A	B	C	D	E	F	G	H
NH1XL	260	235	28	77,5	103,5	305	M10	66
NH2XL	285	260	32	88	113,8	305	M12	66
NH3L	300	270	38	97	127,5	326	M12	82

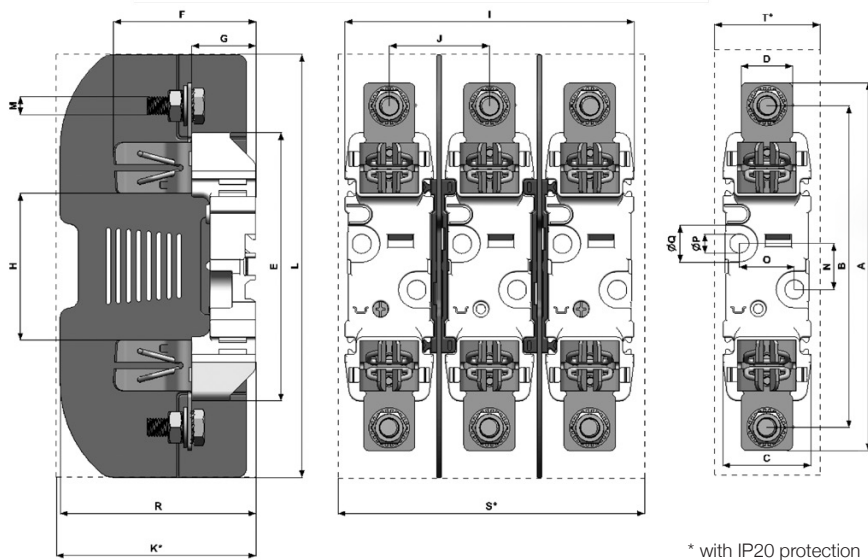




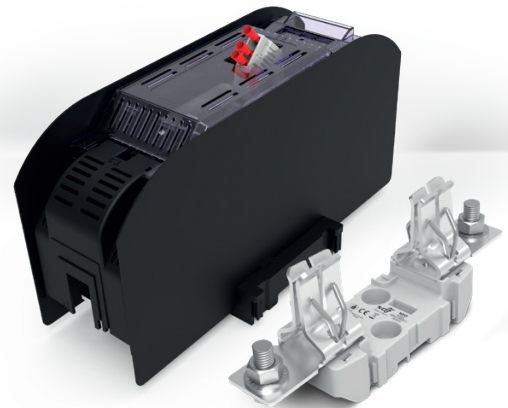
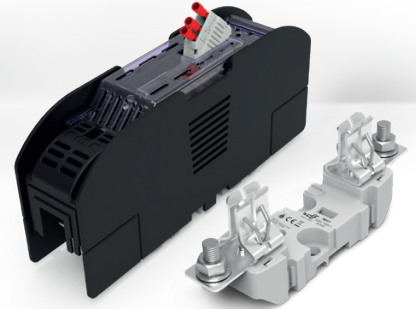
ST NH 690V/800V AC fuse bases

RATED VOLTAGE	RATED CURRENT	PROTECTION INDEX
690V/800V AC	250A ^(NH)	IP00 IP20
	630A ^(NH)	

DIMENSIONS



* with IP20 protection

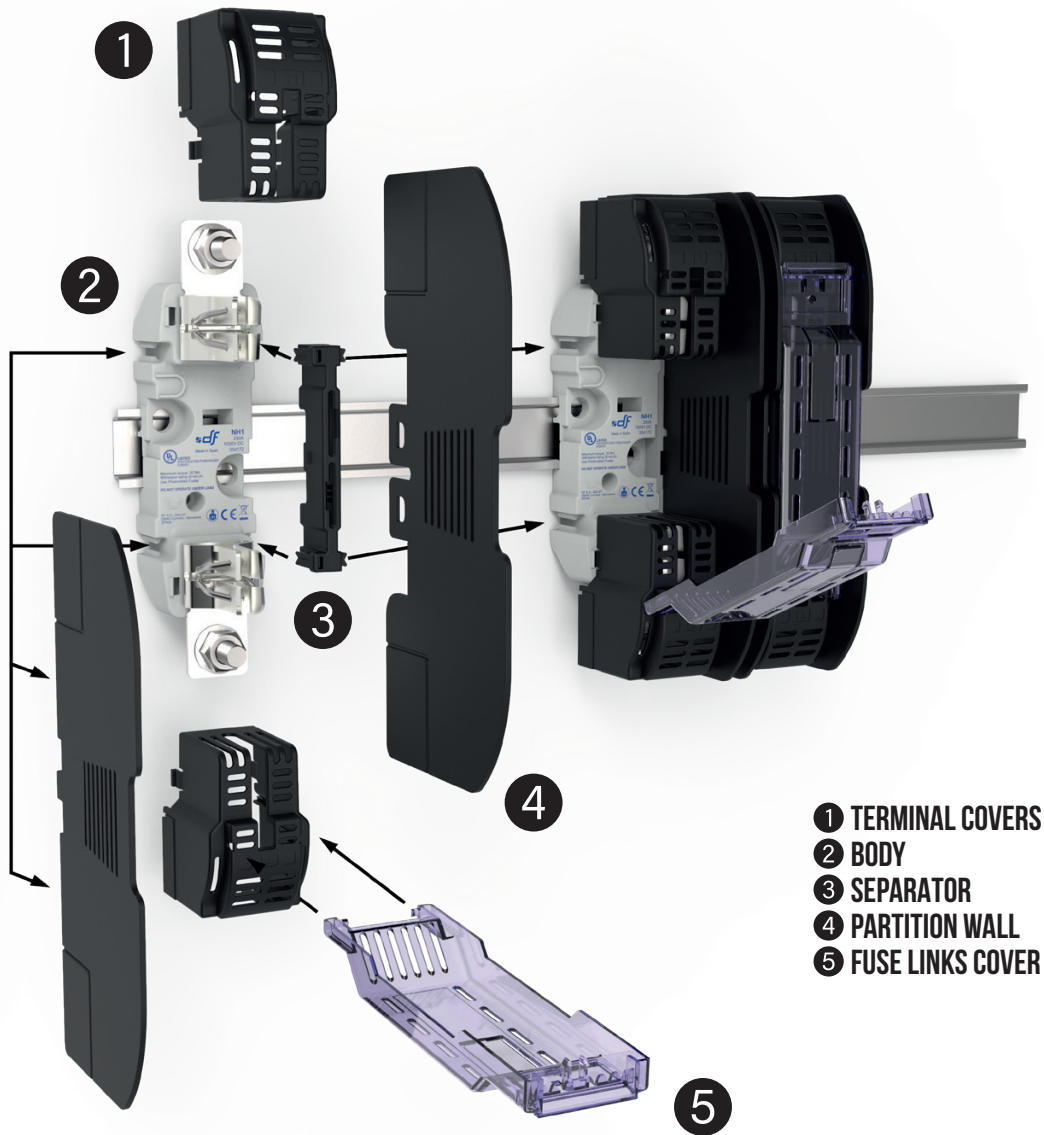


	A	B	C	D	E	F	G	H	I	J	K	L	M	N	O	P	Q	R	S	T
NH1	200	175	48	28	146	77,5	35	80	169,5	60,8	107	230	M10	25	30	10,5	20	107	175	54
NH3	240	210	60	38	146	97	35	80	224	82	143	270	M12	25	30	10,5	20	143	281	116



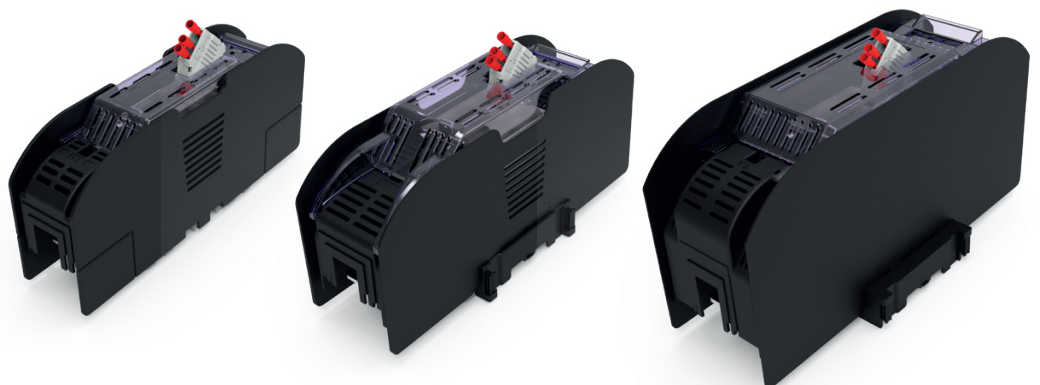
ST
NH 1000V DC
fuse bases

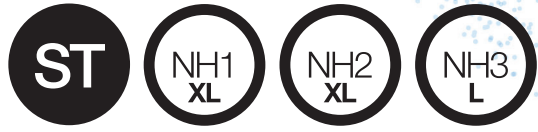
ACCESSORIES ASSEMBLY



- 1 TERMINAL COVERS
- 2 BODY
- 3 SEPARATOR
- 4 PARTITION WALL
- 5 FUSE LINKS COVER

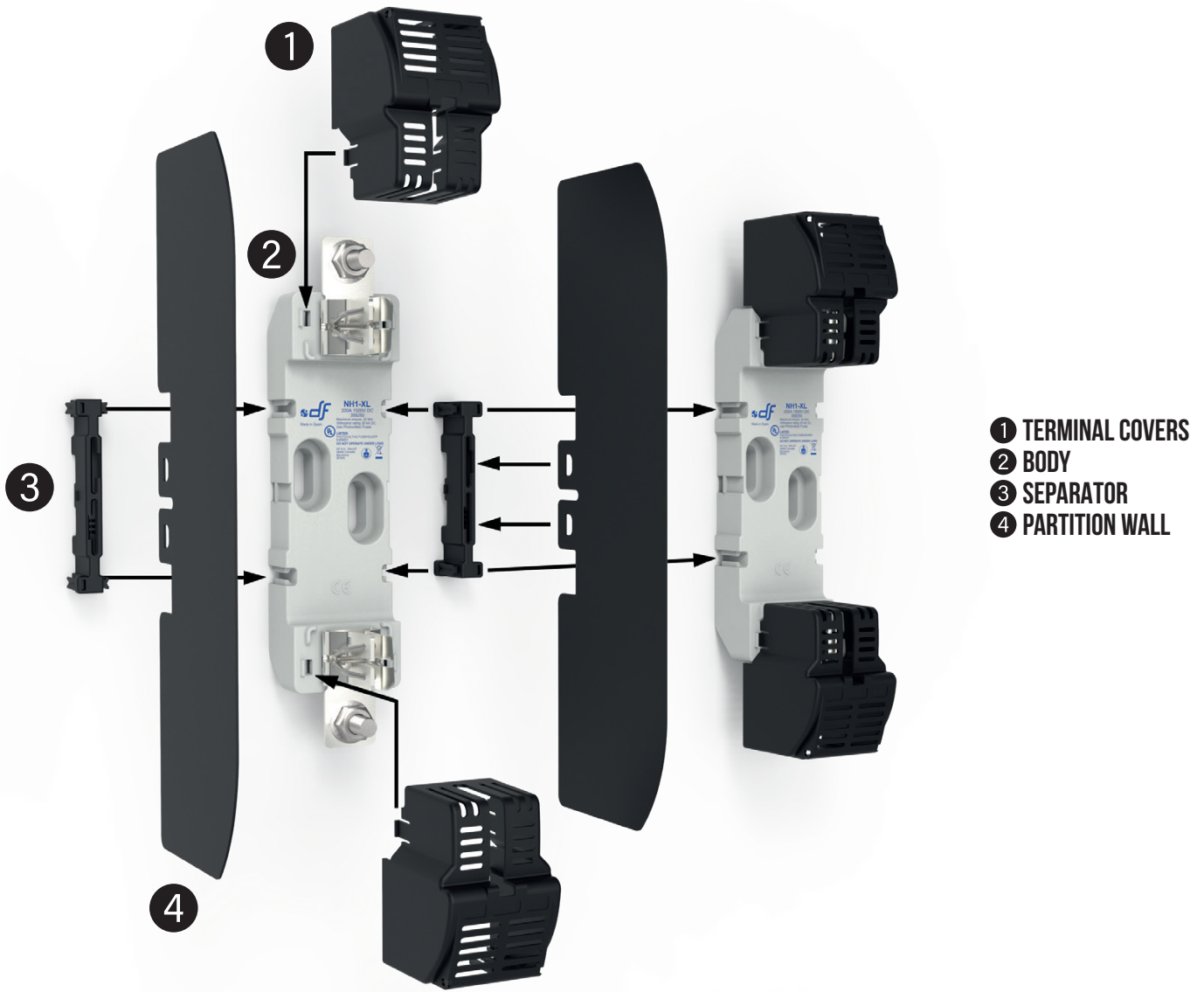
The fuseholder allows using simultaneously a microswitch for NH fuse links and IP20 protection accessories.



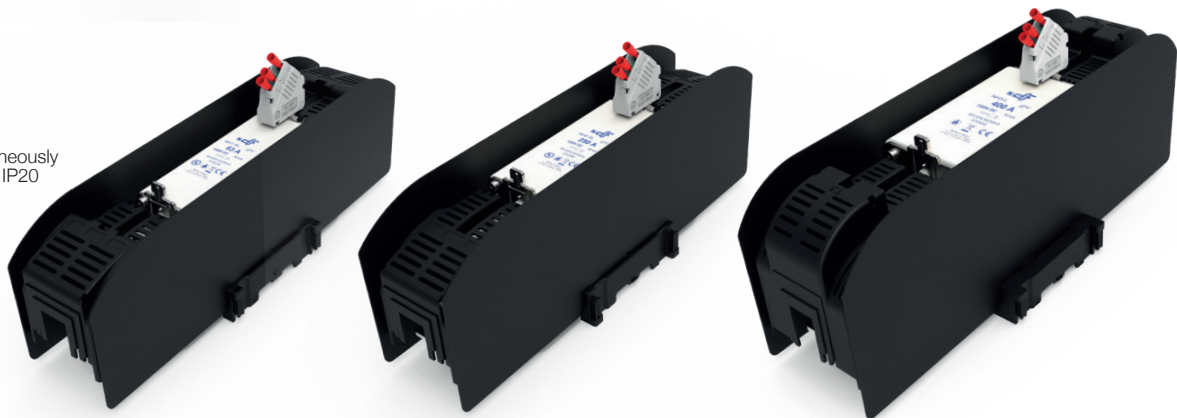


ST
NH XL1500V DC
fuse bases

ACCESSORIES ASSEMBLY



The fuseholder allows using simultaneously a microswitch for NH fuse links and IP20 protection accessories.



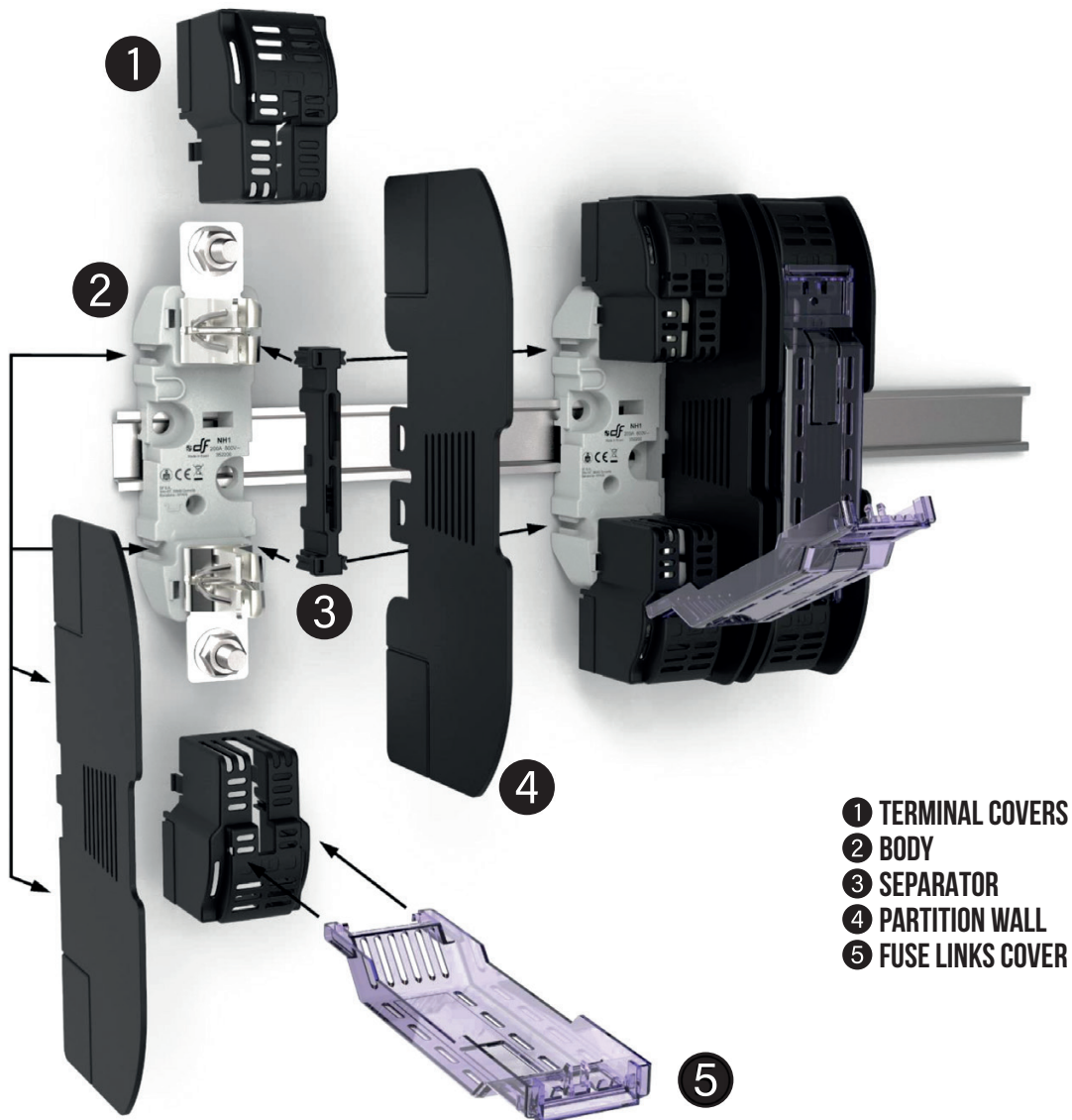
ACCESSORIES

PAG 18



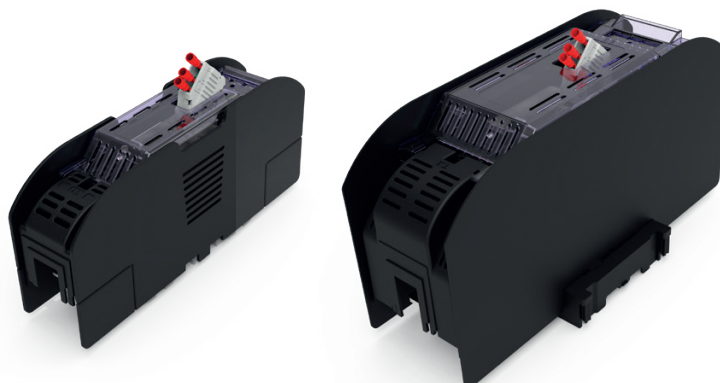
ST
NH 690V/800V AC
fuse bases

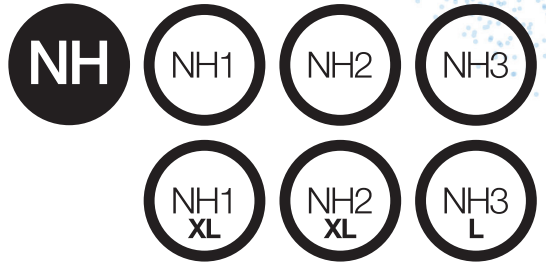
ACCESSORIES ASSEMBLY



- 1 TERMINAL COVERS
- 2 BODY
- 3 SEPARATOR
- 4 PARTITION WALL
- 5 FUSE LINKS COVER

The fuseholder allows using simultaneously a microswitch for NH fuse links and IP20 protection accessories.

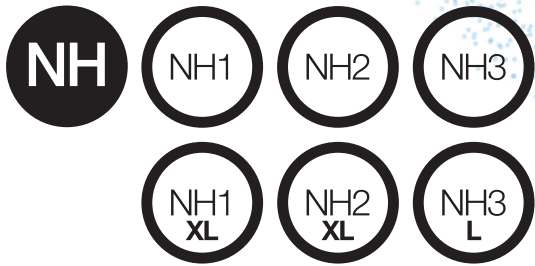




FUSE PULLERS
NH 1000V DC
NH XL 1500V DC
accessories

DIMENSIONS

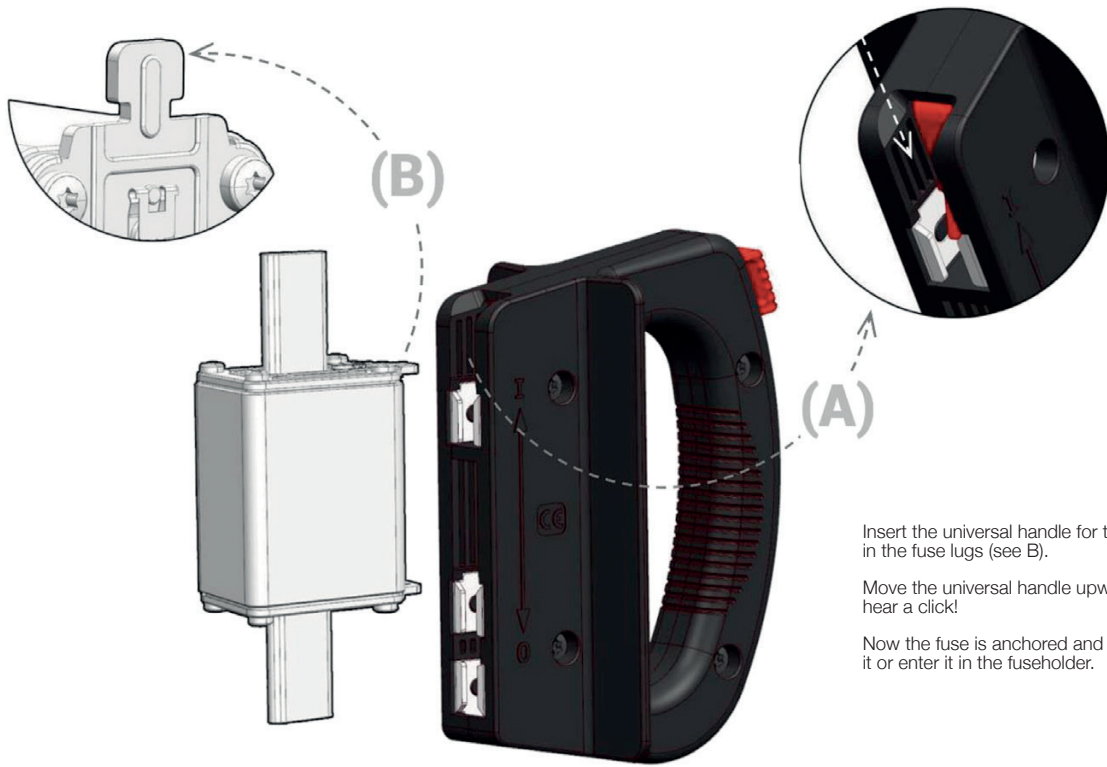




FUSE PULLERS

NH 1000V DC
NH XL 1500V DC
accessories

INSTRUCTIONS



Insert the universal handle for the top (see A) in the fuse lugs (see B).

Move the universal handle upward until you hear a click!

Now the fuse is anchored and you can remove it or enter it in the fuseholder.

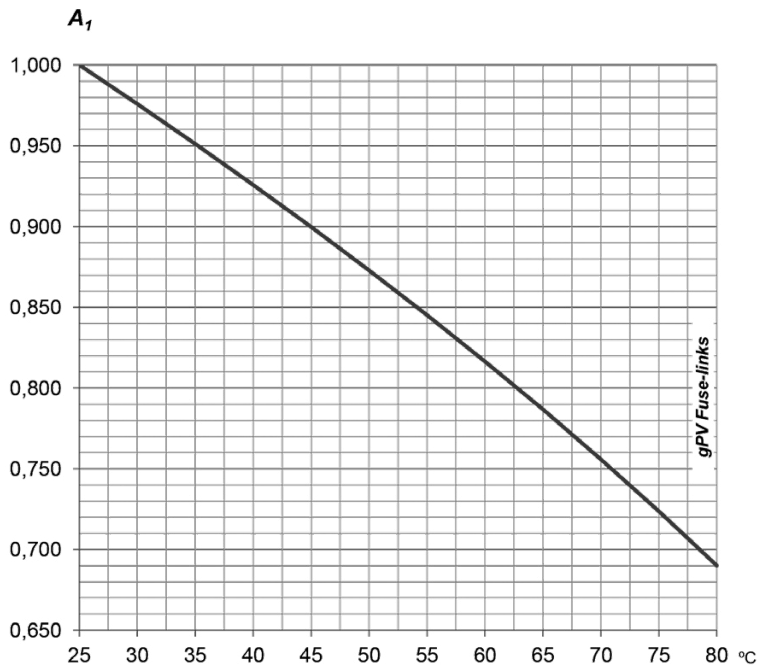


To remove the universal handle from the fuse, press the red button and move the handle downward.

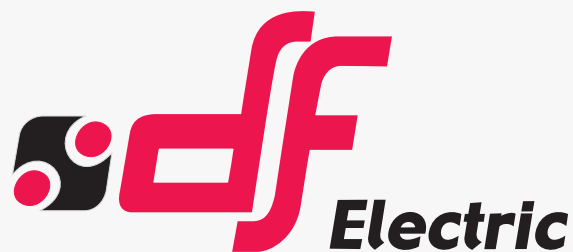
CYL | gPV
CYLINDRICAL
fuse links

NH | gPV
NH
fuse links

AMBIENT TEMPERATURE DERATING FACTOR



ta (°C)	A1
25	1,00
30	0,98
35	0,95
40	0,93
45	0,90
50	0,87
55	0,84
60	0,82
65	0,79
70	0,76
75	0,72
80	0,69



PROTECTING THE WORLD



HEAD OFFICE AND FACTORY

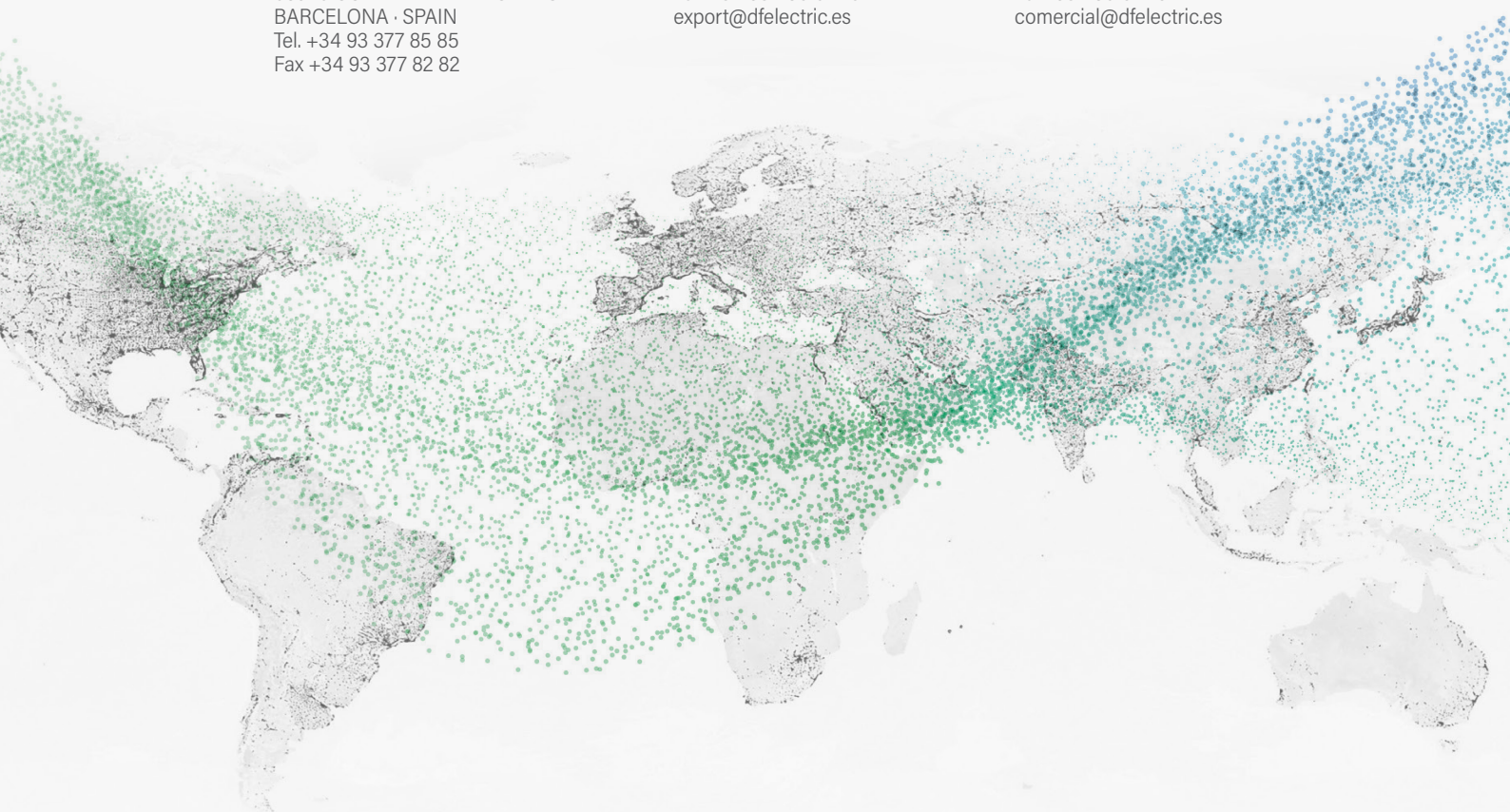
SILICI, 67-69
08940 CORNELLA DE LLOBREGAT
BARCELONA · SPAIN
Tel. +34 93 377 85 85
Fax +34 93 377 82 82

INTERNATIONAL SALES

Tel. +34 93 475 08 64
Fax +34 93 480 07 75
export@dfelectric.es

NATIONAL SALES

Tel. 93 475 08 64
Fax 93 480 07 76
comercial@dfelectric.es



dfelectric.es



According to the waste of electrical and electronic equipment directive, electrical material should not be part of the usual waste. This symbol alerts users that these products should be recycled according to local environmental waste disposal regulations.



The "electro technical expert" logo marked on the products included in this data sheet indicates that the installation of these products must be carried out by expert personnel with specialized knowledge.



To prevent electrical hazards, carry out the installation without voltage.



Safety notice

Please capture the following QR code and read our safety notice carefully before installing our products.



The data reflected in this technical record are subject to the correct installation of the product in accordance with manufacturer's instructions, relevant installation standards and professional practices, maintained and used in applications for which they were made.

The products described in this document have been designed, developed and tested in accordance with specific standard. They are considered components that are integrated as part of installation, machine or equipment. The correct general operation of the referred product is responsibility of the manufacturer of the installation, machine or equipment.

DF ELECTRIC cannot guarantee the characteristics of an installation, machine or equipment that has been designed by a third party. Once a product has been selected, the user must verify that it is appropriate for its application, through the verifications and/or tests that it deems appropriate.

DF ELECTRIC retains the right to change the dimensions, specifications, materials or design of its products at any time with or without notice.